



**Muncaster Road, SW11**

**£950,000**

**Dexters**



## Muncaster Road, SW11

An exceptional Victorian conversion measuring over 1,000 sq ft located 'Between The Commons'. Comprising a large reception room, separate kitchen & dining area, two double bedrooms, family bathroom and a private garden. The property also benefits from a share of freehold, has plenty of storage space including the cellar, has a separate WC and is being sold chain free.

Upon entering you are greeted by a wide and welcoming hallway. To the left is a large reception room with high ceilings, original wooden floors and bespoke cabinetry. A double bedroom is located next door with built in storage. The second double bedroom is towards the rear of the property and overlooks the private garden. The eat-in kitchen and dining room is positioned next door which leads onto the garden making this space a great entertaining area. The cellar, family bathroom and separate WC completes the accommodation.

Muncaster Road is located between Clapham Common and Wandsworth Common and is one of the more sought-after streets between the commons. Clapham Junction, an array of shops, bars and restaurants as well as a selection of great schools are all nearby.

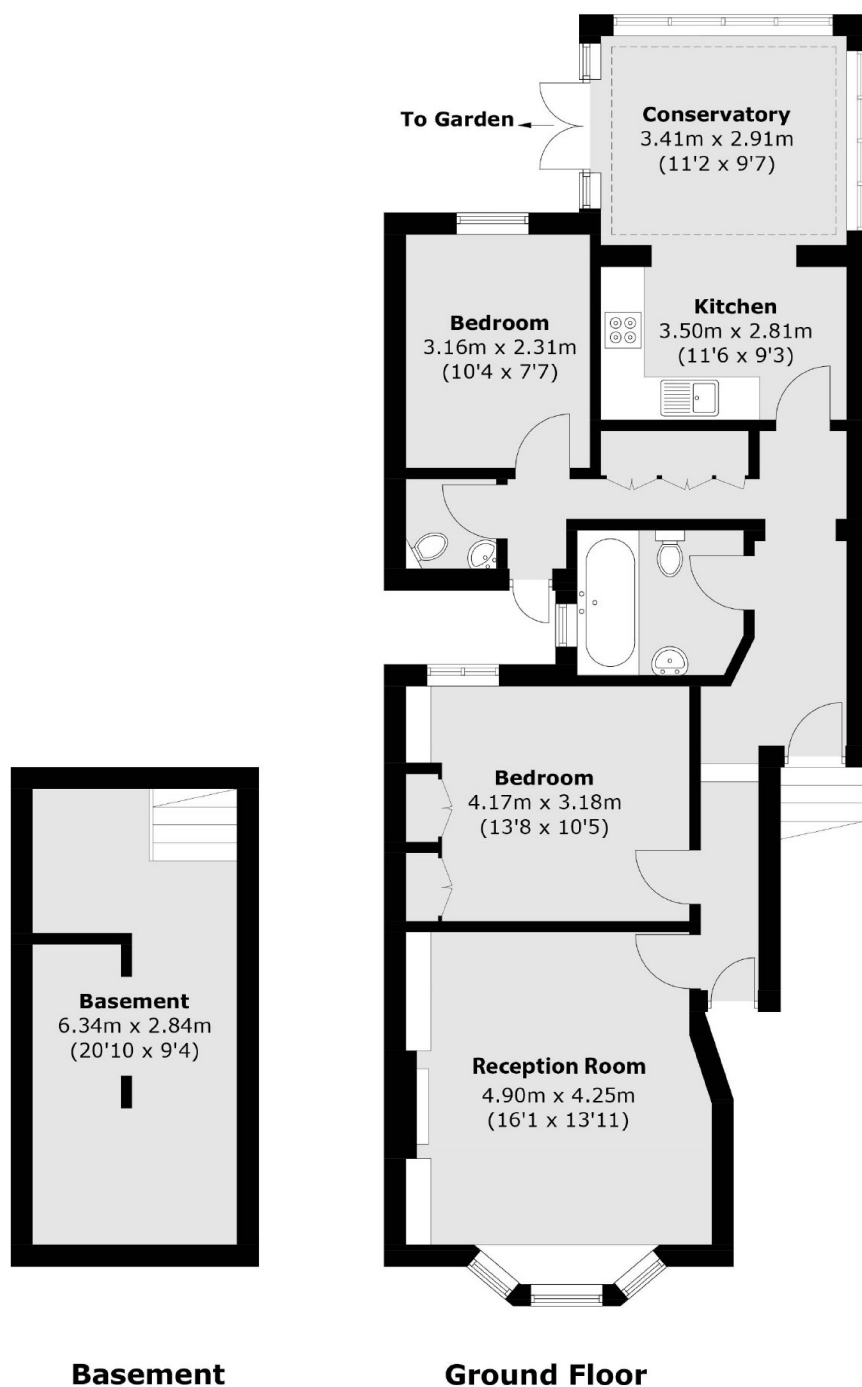
### Features

- Between The Commons
- Two Double Bedrooms
- Family Bathroom
- Private Garden
- Share Of Freehold
- Chain Free





# Muncaster Road, London, SW11



Total area (approx.): 100.1 sq. m (1,077.4 sq. ft)