



Theatre Street, SW11

£500,000

A charming, split level maisonette measuring just under 800 Sq. Ft. Situated on the sought after Theatre Street. Presented in immaculate order throughout, comprising a large reception room, a separate modern eat-in kitchen, extra large double bedroom and a family bathroom. The property further benefits from lots of bespoke built-in storage & has a share of the freehold.

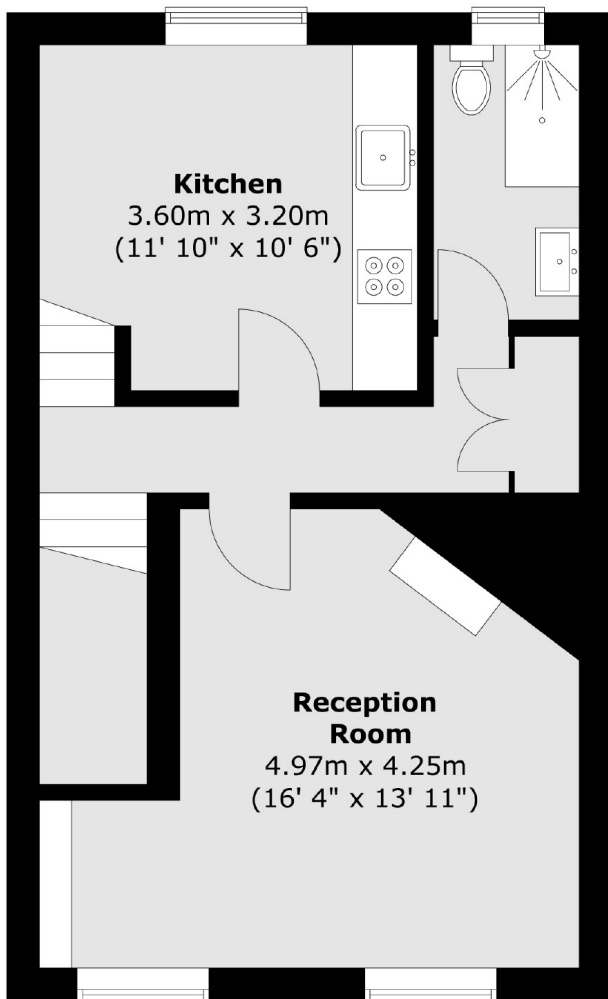
Theatre Street is a sought after residential street off Lavender Hill located near some of the areas best schools. Northcote Road is close by with an array of bars, restaurants and cafés. Transport links can be found at Clapham Common and Clapham Junction alongside local bus routes with access to the beautiful Battersea Park, Iconic Battersea Power Station & busy Sloane Square.

Features

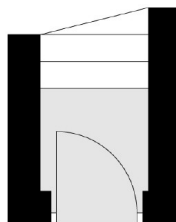
- Extra Large Double Bedroom
- Own Front Door
- Spacious Reception Room
- Measuring Nearly 800 Sq Ft
- Share Of Freehold
- Eat-In Kitchen

Theatre Street, London, SW11

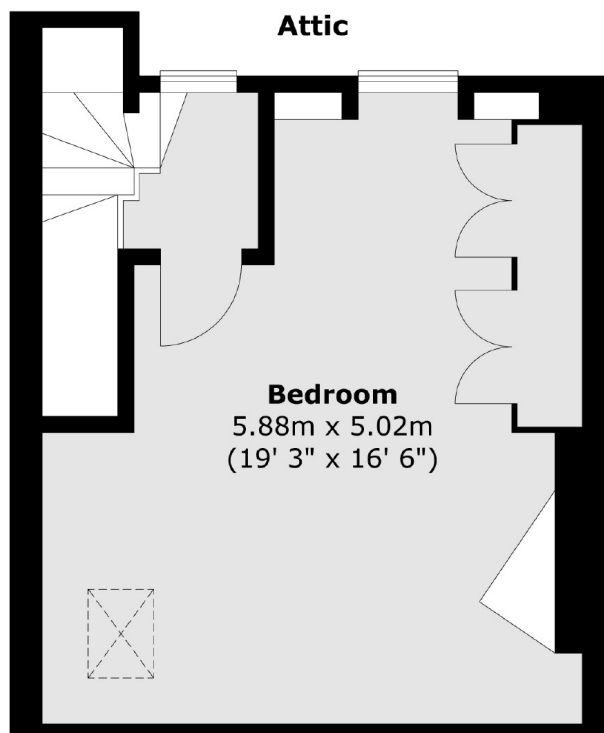
First Floor



Ground Floor



Attic



Total area (approx.) : 74.2 sq. m (799 sq. ft)