



Queenstown Road, SW8

£400,000

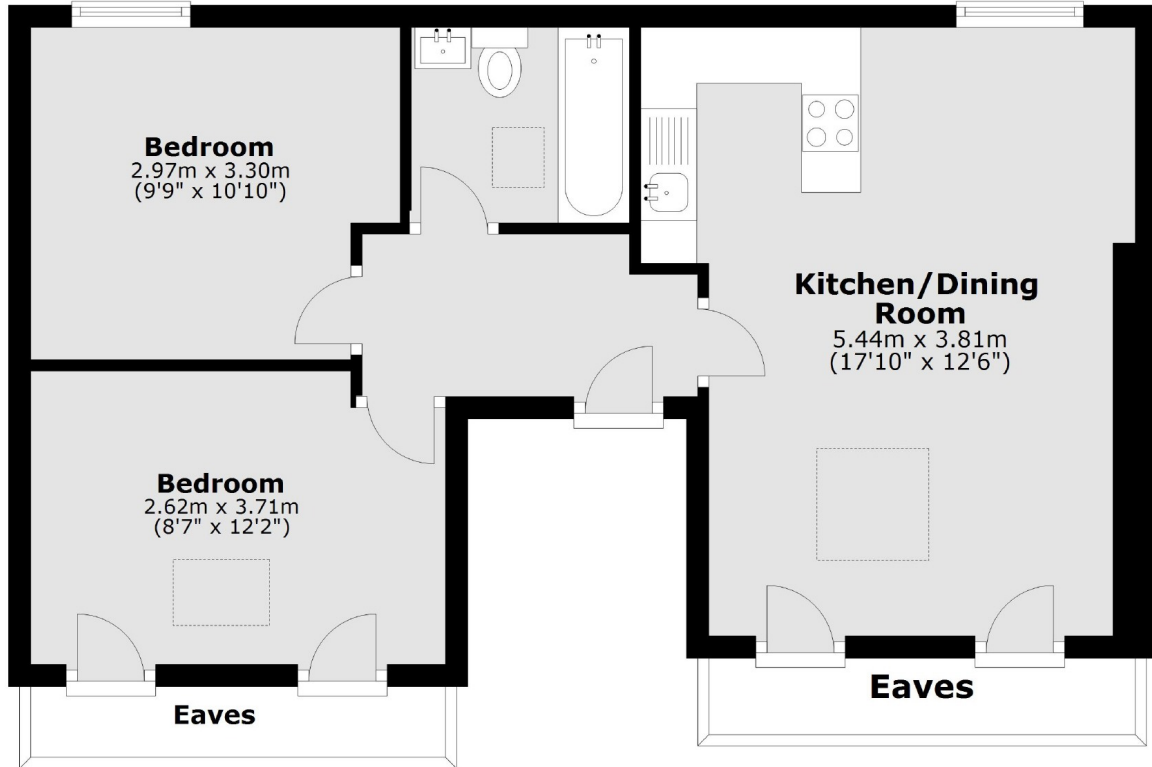
A well presented top floor flat in a Victorian building in the Diamond Conservation area. The property has two double bedrooms, plenty of storage and a spacious kitchen and living area.

Close to the Battersea Power Station Regeneration, Queenstown Road is ideally located for Battersea Park, Chelsea and Clapham Common, with convenient transport links via Battersea Park Road, Queenstown Road, as well as the Northern Line Extension.

Features

- Two Double Bedrooms
- Top Floor Flat
- Open Plan Living
- Leasehold
- Diamond Conservation Area
- Close To Transport

Queenstown Road, London, SW8



Total area: approx. 49.6 sq. metres (534.0 sq. feet)