



## Thirsk Road, SW11

£1,100,000

An exceptional four/five double bedroom, two bathroom semi-detached freehold home providing beautifully presented living and entertaining space over two floors with a private garden. The property benefits further from side access into the garden is being offered chain free.

Thirsk Road is a sought after quiet residential street located North of Clapham Common. It is situated in the catchment areas for some of the best schools; Belleville Primary School, Eaton House, Parkgate House, and Belleville Wix Academy.

### Features

- Freehold Home
- Large Reception Room
- Four/Five Double Bedrooms
- Two Bathrooms
- Private Garden & Side Access
- Chain Free

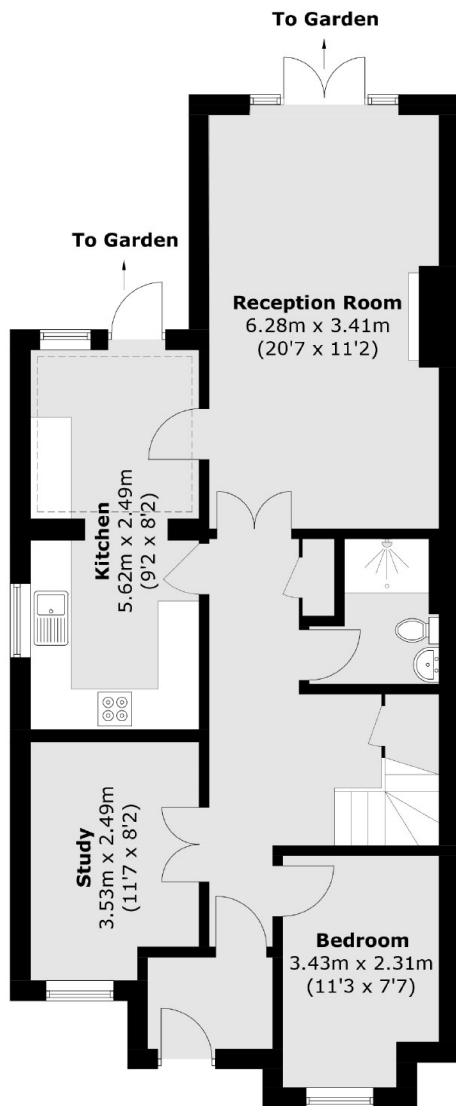


## Thirsk Road, SW11

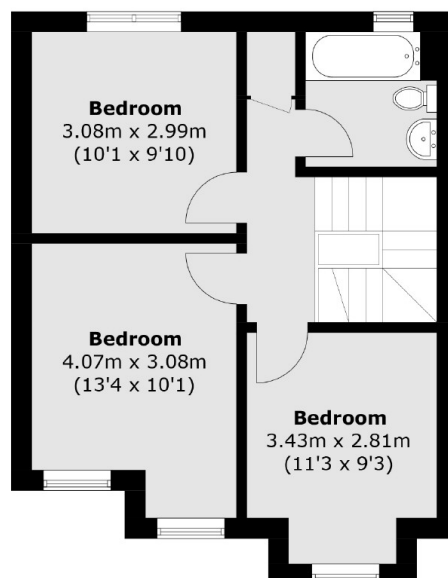
As you enter you have a wide and welcoming hallway. To the right you have a versatile double room currently being used as a bedroom with bay window. Opposite you have a study room with plenty of space for working from home. As you continue through the hallway you have under stairs storage and a shower room. Towards the back of the property you have a kitchen on the left hand side with skylight and rear door leading the the garden. The private garden can also be accessed via the large reception room through double doors. The reception room has multiple seating areas and plenty of room for dining, a great space for entertaining. Upstairs you have three double bedrooms and a family bathroom.



# Thirsk Road, London, SW11



**Ground Floor**



**First Floor**

Total area (approx.): 117.1 sq. m (1,260.4 sq. ft)