



Sugden Road, SW11
£550,000

Dexters



Sugden Road, SW11

A spacious first floor period conversion measuring over 600 sq ft. Arranged to include a reception, separate kitchen, two bedrooms, family bathroom and a large west facing roof terrace. The property also benefits from being sold chain free.

The apartment is entered via a welcoming hallway leading to a bright and spacious reception room, perfect for relaxing or entertaining. There are two well-proportioned bedrooms and a bathroom, while the kitchen sits separately, offering a practical and well-arranged layout. The standout feature is the impressive west-facing private roof terrace, providing exceptional outdoor space that enjoys afternoon and evening sun, ideal for entertaining, al fresco dining, or simply unwinding outdoors.

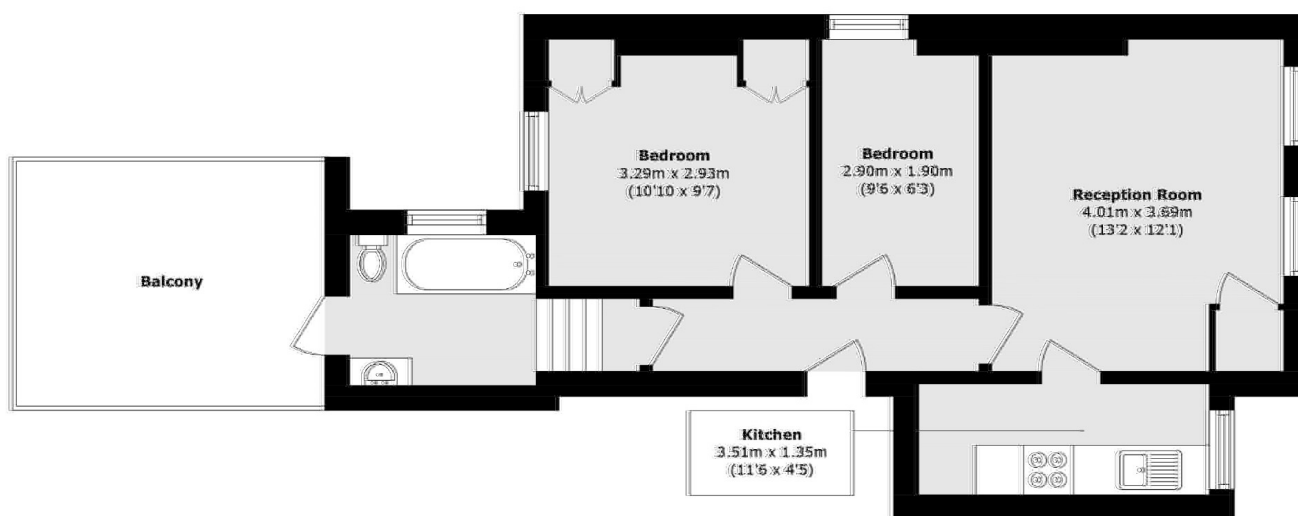
Sugden Road is located moments from Clapham Common and the many shops, cafés, gyms and restaurants on Lavender Hill. The fashionable Northcote Road is within a short walk, along with the department stores and excellent transport links of Clapham Junction

Features

- Period Conversion
- Large Private Roof Terrace
- Two Bedrooms
- Family Bathroom
- Superb Location
- Chain Free



Sugden Road, London, SW11



Total area (approx.): 56.2 sq. m (604.9 sq. ft)

Balcony area (approx.): 11.0 sq. m (118.4 sq. ft)

Dexters

Northcote Road
93 St. John's Road
London
SW11 1QY
Sales
020 7483 6333

Energy Rating: D. We aim to make our particulars both accurate and reliable. However they are not guaranteed; nor do they form part of an offer or contract. If you require clarification on any points then please contact us, especially if you're traveling some distance to view. Please note that appliances and heating systems have not been tested and therefore no warranties can be given as to their good working order.

 **RICS** | Regulated
Estate Agent
and Letting Agent

[dexters.co.uk](https://www.dexters.co.uk)