



Juniper Drive, SW18
£1,000,000

Dexters



Juniper Drive, SW18

An impressive three double bedroom lateral apartment situated within the sought-after Ensign House in the Battersea Reach development. Comprising a large open plan reception room/kitchen/dining room, three double bedrooms, two bathrooms & two balconies both overlooking the River Thames. The property benefits further from a 24 hour concierge, on site gym and underground parking.

There are three double bedrooms, the Principle bedroom has an en suite bathroom and built in storage. There is a fantastic oversized living area perfect for entertaining. The modern kitchen has plenty of worktop space and storage and includes a range of fitted appliances with breakfast bar overlooking the dining area.

There are two balconies, one off the reception room and one off the Principle bedroom with stunning views of London and the Thames which are directly accessed via large sliding doors. Access to the flat couldn't be easier with underground parking and lift access straight into the communal hallway.

The Battersea Reach development offers high end riverside accommodation and is conveniently located for access North of the River and into Central London. Wandsworth Town station and Clapham Junction are nearby.

Features

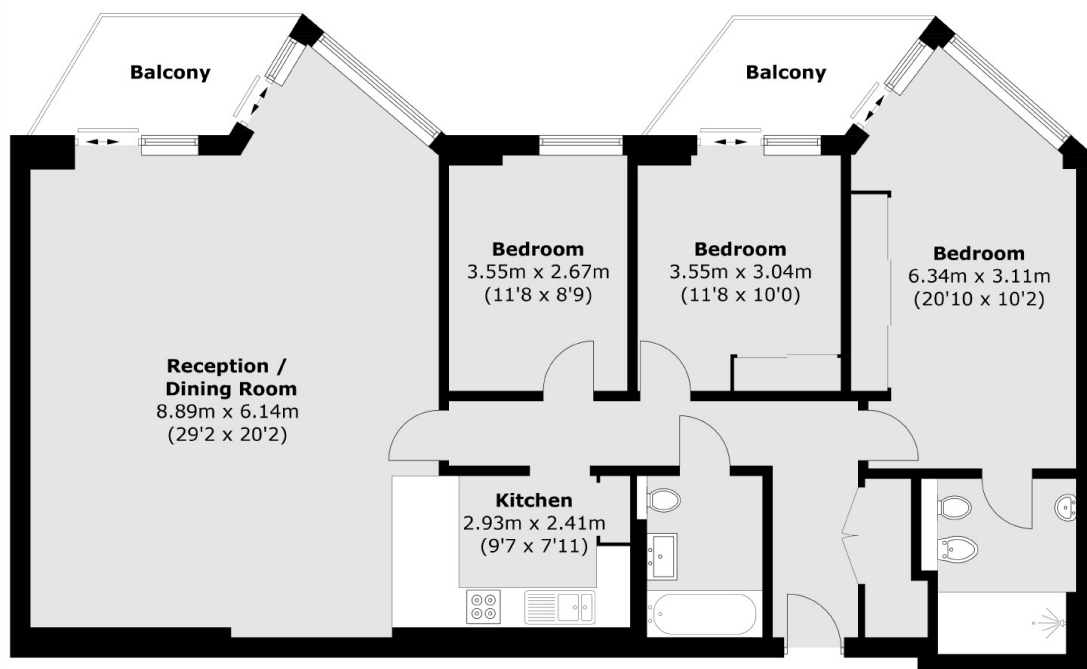
- Stunning River Views
- Three Double Bedrooms
- Two Bathrooms
- Two Balconies
- Underground Parking
- Concierge/Gym







Juniper Drive, London, SW18



Total area (approx.): 121.3 sq. m (1306.0 sq. ft)
Balcony area (approx.): 10.4 sq. m (111.9 sq. ft)

Dexters

Northcote Road
93 St. John's Road
London
SW11 1QY
Sales
020 7483 6333

Energy Rating: B. We aim to make our particulars both accurate and reliable. However they are not guaranteed; nor do they form part of an offer or contract. If you require clarification on any points then please contact us, especially if you're traveling some distance to view. Please note that appliances and heating systems have not been tested and therefore no warranties can be given as to their good working order.

 **RICS** | Regulated
Estate Agent
and Letting Agent

[dexters.co.uk](https://www.dexters.co.uk)