



**Tyneham Road, SW11**  
**£925,000**

**Dexters**





## Tyneham Road, SW11

A beautifully extended three-bedroom freehold house set within the highly sought-after Shaftesbury Estate measuring over 1,100 Sq Ft (including eaves). The accommodation comprises a double reception room, separate kitchen, family bathroom & private garden.

The ground floor features a generous double reception room with bay window and comfortable seating areas, leading through to a bright kitchen/dining room with doors opening directly onto the private garden, ideal for entertaining and al fresco dining. On the first floor, there are two well-proportioned bedrooms and a family bathroom, while the second floor provides a spacious principal bedroom with built-in storage and pleasant rooftop views.

Tyneham Road is a residential street in the popular Shaftesbury area of Battersea. Clapham Common, Battersea Park & the iconic Battersea Power Station are all nearby, as are the transport links at Clapham Junction mainline train station.

### Features

- Shaftesbury Estate
- Extended Freehold
- Three Double Bedrooms
- Eat-In Kitchen
- Private Garden
- Superb Location



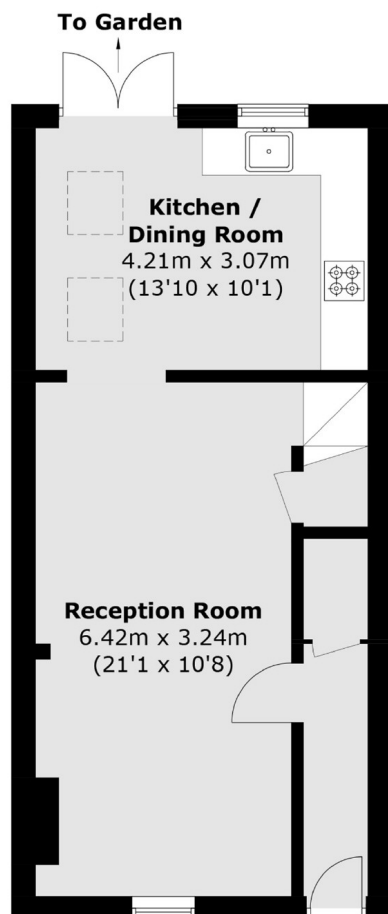




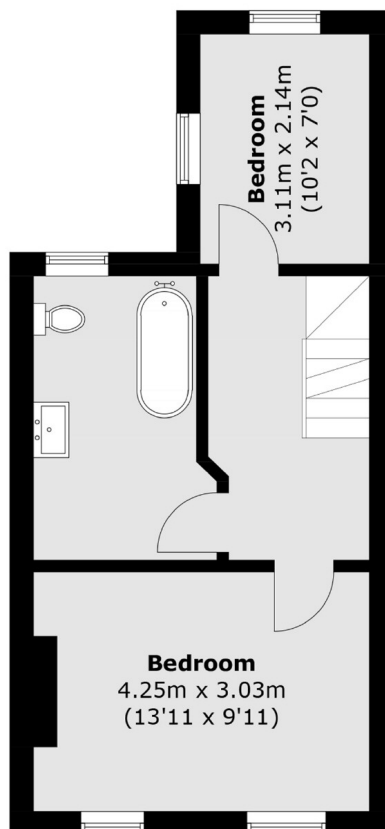




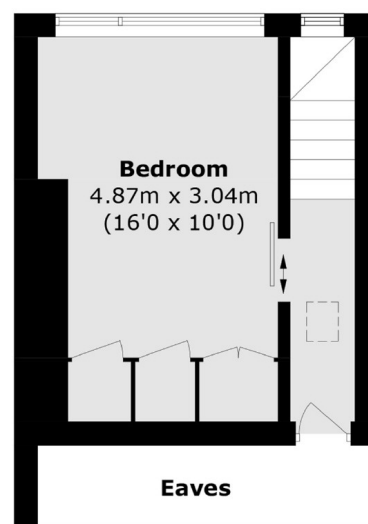
# Tyneham Road, London, SW11



**Ground Floor**



**First Floor**



**Second Floor**

Total area (approx.): 95.2 sq. m (1024.6 sq. ft)  
(Excluding Eaves)