



## Arundel Close, SW11

### £550,000

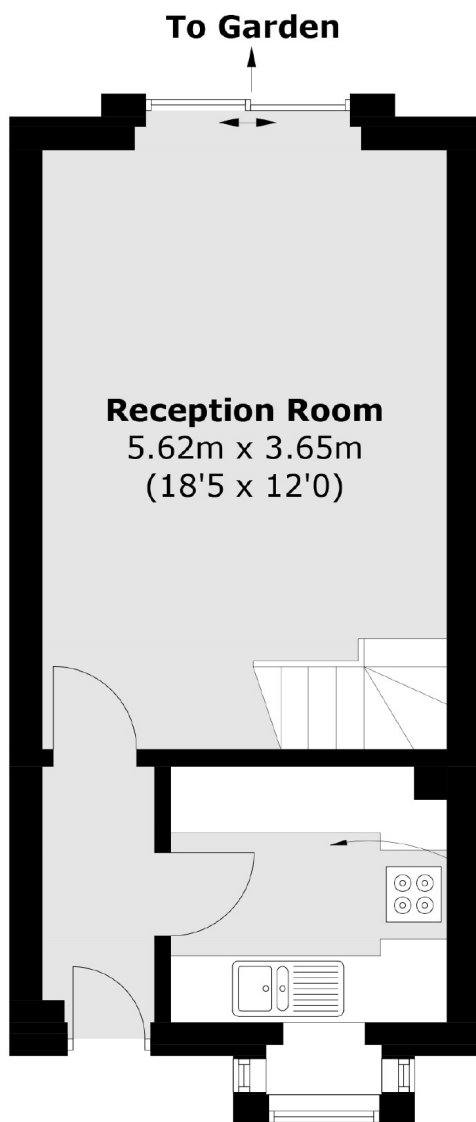
A rarely available, two bedroom freehold house in need of modernisation located in a quiet cul-de-sac 'between the commons'. Comprising a spacious reception room, separate kitchen, two double bedrooms, family bathroom, private garden and allocated parking. The property further benefits from being sold chain free.

Arundel Close is located off Wandsworth Common, a short stroll from Battersea Rise with its excellent selection of shops, bars and restaurants and is located close to all of the amenities on Northcote Road. Clapham Junction station is very close, offering excellent mainline transport links.

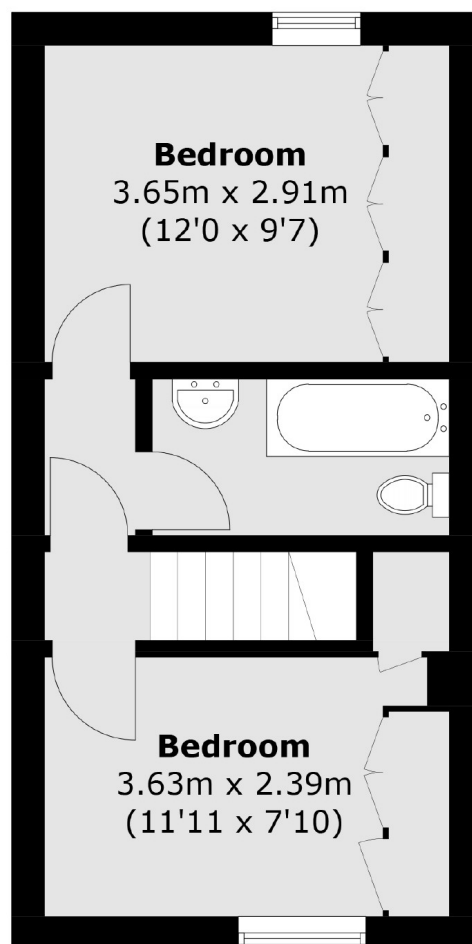
### Features

- Freehold House
- Between The Commons
- In Need Of Modernisation
- Two Double Bedrooms
- Chain Free
- Allocated Parking

# Arundel Close, London, SW11



**Ground Floor**



**First Floor**

Total area (approx.): 58.2 sq. m (626.4 sq. ft)