



Queenstown Road, SW11

£425,000

A stunning one double bedroom apartment in the sought after Chelsea Bridge Wharf development opposite Battersea Park and moments from the Iconic Battersea Power Station & Northern line extension. The property features an open plan kitchen and reception room & modern bathroom. The property further benefits from a 24 hr concierge, has parking available under separate negotiation and the property is located in zone 1.

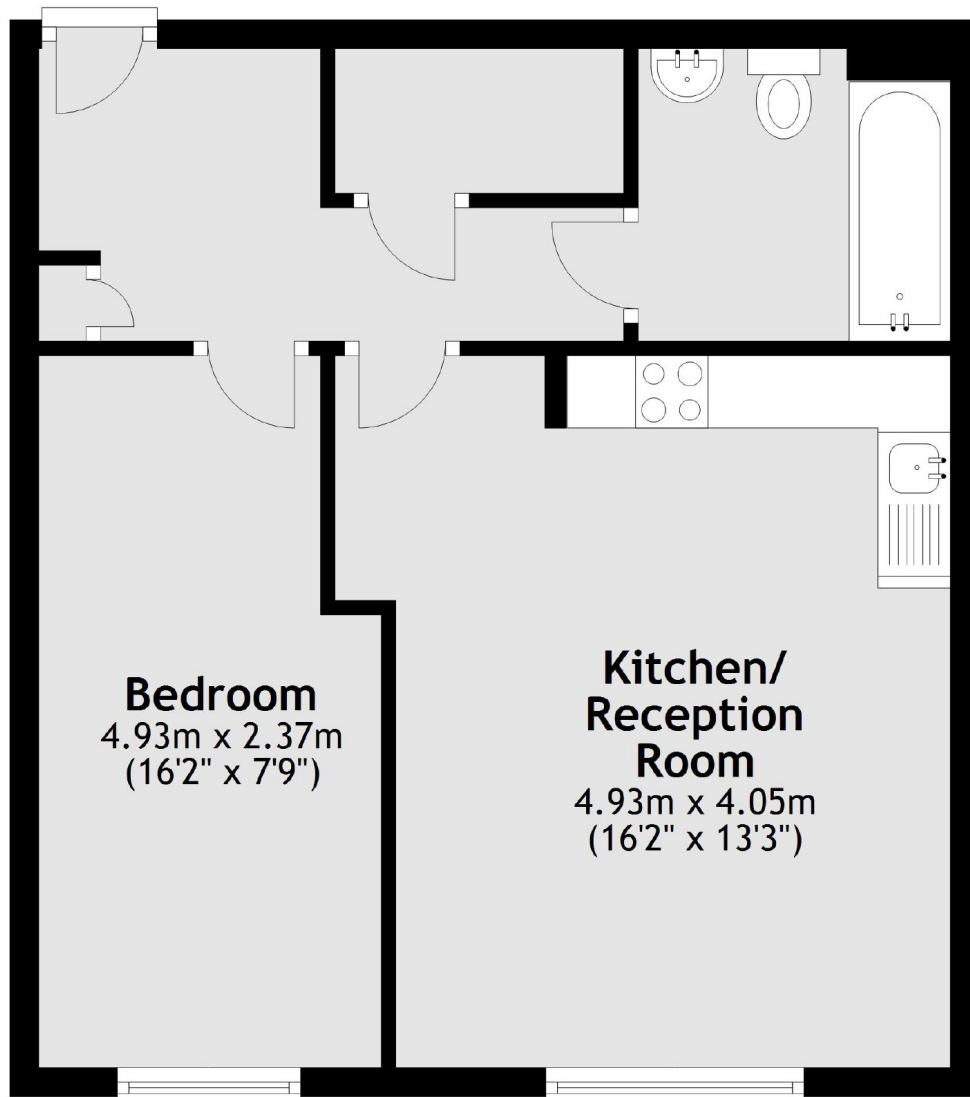
Chelsea Bridge Wharf is located close to the the river and opposite Battersea Park, Sloane Square, and Battersea Power Station. Queenstown Road and Battersea Park national rail stations are a short walk away, as is Sloane Square underground station.

Features

- One Double Bedroom
- Modern Kitchen
- Family Bathroom
- Opposite Battersea Park
- Modern Development
- 24 Hr Concierge & Security

**Queenstown Road,
London, SW11**

Third Floor



Total area: approx. 44.5 sq. metres (479.5 sq. feet)