



## Queenstown Road, SW8

### £495,000

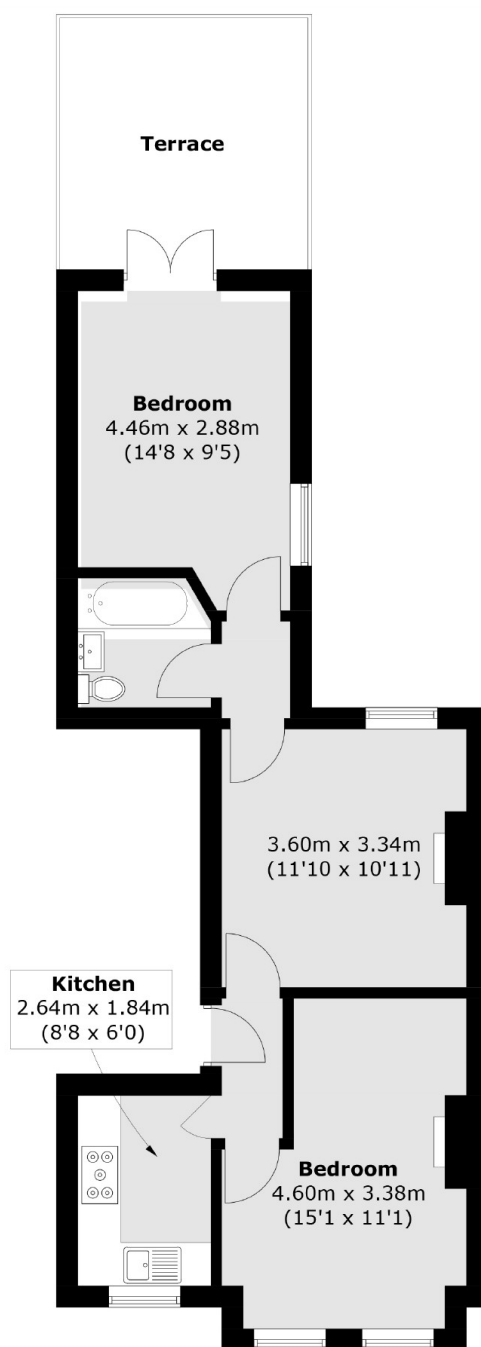
A two double bedroom first floor flat measuring over 548 Sq Ft. Set in a beautiful Victorian building situated on the sought after Queenstown Road. The apartment comprises of a reception room, separate modern kitchen, two double bedrooms and family bathroom. The property benefits further from a large private roof terrace and is being sold chain free.

Queenstown Road is in the heart of the Diamond Conservation Area, close to the Battersea Power Station, ideally located for Battersea Park, Chelsea and convenient transport links via Battersea Park Road, Queenstown Road, as well as the Northern Line Extension.

### Features

- Period Conversion
- Two Double Bedrooms
- Modern Kitchen
- Private Roof Terrace
- Superb Location
- Chain Free

# Queenstown Road, London, SW8



## First Floor

Total area (approx.): 51.0 sq. m (548.9 sq. ft)  
Terrace (approx.): 12.1 sq. m (130.2 sq. ft)

# Dexters

Northcote Road  
93 St. John's Road  
London  
SW11 1QY  
Sales  
020 7483 6333

Energy Rating: C. We aim to make our particulars both accurate and reliable. However they are not guaranteed; nor do they form part of an offer or contract. If you require clarification on any points then please contact us, especially if you're traveling some distance to view. Please note that appliances and heating systems have not been tested and therefore no warranties can be given as to their good working order.

 **RICS** | Regulated  
Estate Agent  
and Letting Agent

[dexters.co.uk](https://www.dexters.co.uk)