



## Inworth Street, SW11

£525,000

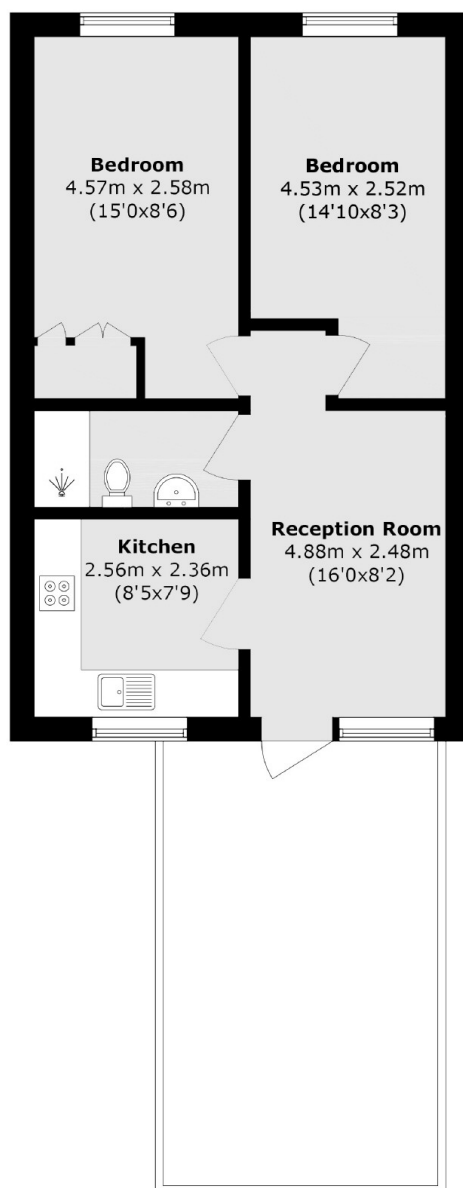
A two double bedroom top floor period conversion moments from the River Thames. Arranged to include a reception room, modern kitchen, two double bedrooms and family bathroom. The property features a large private roof terrace and is being sold chain free.

Inworth Street is a sought after road near Battersea Park and the iconic Battersea Power Station. Located conveniently for easy access into the Kings Road in Chelsea and the busy Sloane Square. Clapham Junction railway station is also a short walk away.

### Features

Two Double Bedrooms  
Modern Bathroom  
Reception Room  
Modern Kitchen  
Family Bathroom  
Chain Free

# Inworth Street, London, SW11



Total area (approx.): 44.6 sq. m (480.1 sq. ft)

## Dexters

Northcote Road  
93 St. John's Road  
London  
SW11 1QY  
Sales  
020 7483 6333

Energy Rating: C. We aim to make our particulars both accurate and reliable. However they are not guaranteed; nor do they form part of an offer or contract. If you require clarification on any points then please contact us, especially if you're traveling some distance to view. Please note that appliances and heating systems have not been tested and therefore no warranties can be given as to their good working order.

 **RICS** | Regulated  
Estate Agent  
and Letting Agent

[dexters.co.uk](https://www.dexters.co.uk)