

## Lombard Road, SW11

### £375,000

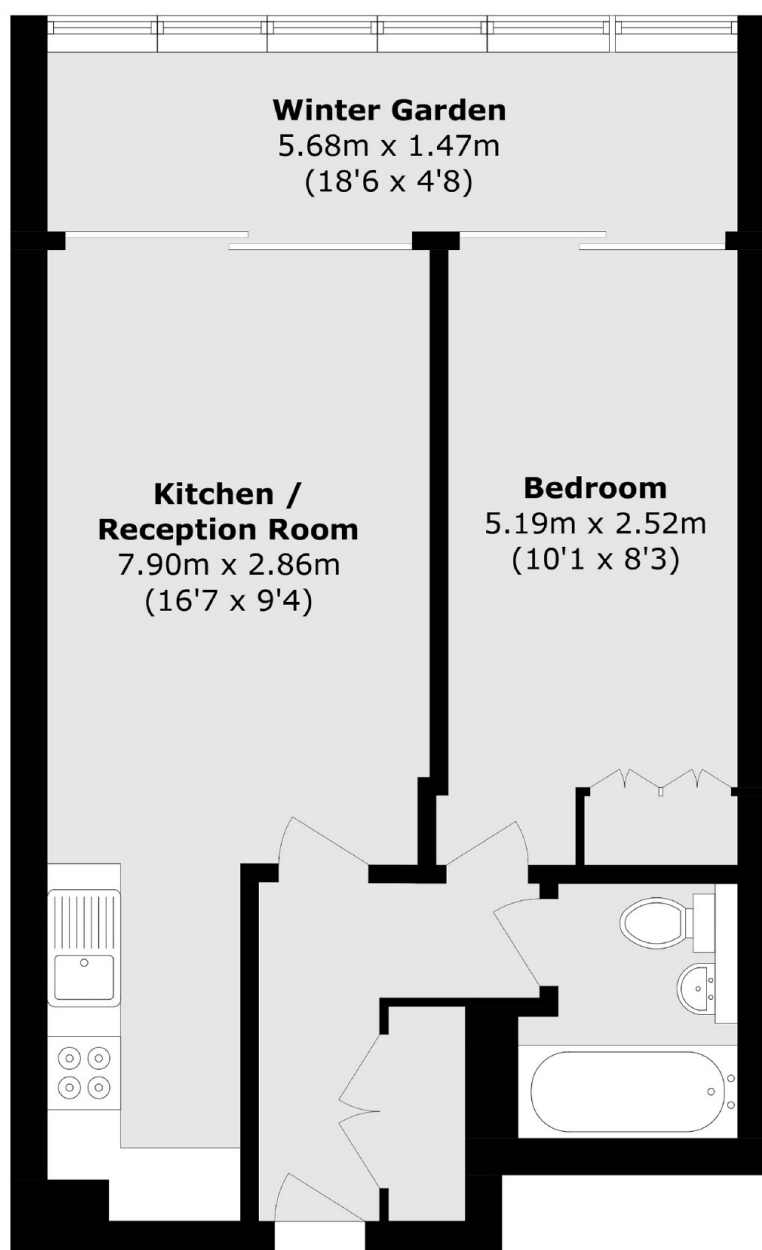
An impressive one double bedroom lateral apartment situated within the sought-after Falcon Wharf development. Comprising an open plan reception/kitchen/dining room, family bathroom, winter balcony and ample storage. The property benefits further from a concierge, has parking available to rent via separate negotiation and has a communal roof terrace with amazing views of the river and the London skyline.

The Falcon Wharf development offers high end riverside accommodation and is conveniently located for access North of the River and into Central London. Wandsworth Town station and Clapham Junction are nearby.

### Features

- Open Plan Kitchen/Reception
- Double Bedroom
- Family Bathroom
- Winter Balcony
- Concierge
- Close To Battersea Park

# Lombard Road, London, SW11



Total area (approx.): 54.1 sq. m (582.3 sq. ft)

## Dexters

Northcote Road  
93 St. John's Road  
London  
SW11 1QY  
Sales  
020 7483 6333

Energy Rating: B. We aim to make our particulars both accurate and reliable. However they are not guaranteed; nor do they form part of an offer or contract. If you require clarification on any points then please contact us, especially if you're traveling some distance to view. Please note that appliances and heating systems have not been tested and therefore no warranties can be given as to their good working order.

 **RICS** | Regulated  
Estate Agent  
and Letting Agent

[dexters.co.uk](https://www.dexters.co.uk)