



St. John's Hill, SW11

£600,000

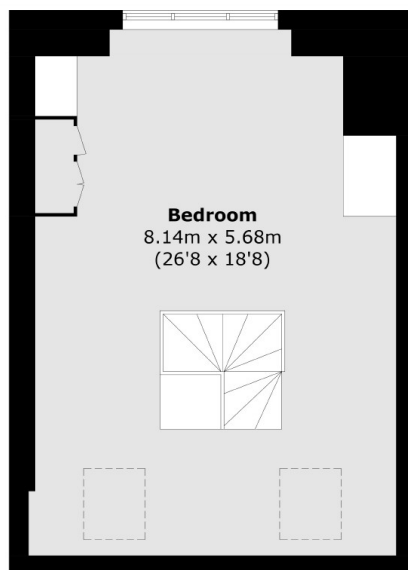
A beautifully presented, bright and spacious, two/three double bedroom apartment measuring 1,028 Sq Ft. It has an open plan reception/kitchen currently being used as a spacious eat-in kitchen, three double bedrooms & family bathroom. The property further benefits from a very spacious loft room which can be used as a separate reception room or double bedroom, has a share of the freehold and is moments from the popular Clapham Junction station.

St. John's Hill is a very popular location set close to the green open spaces of Wandsworth Common. The street has an abundance of bars, restaurants, boutique shops and gyms. The vibrant Northcote Road is just a short stroll away.

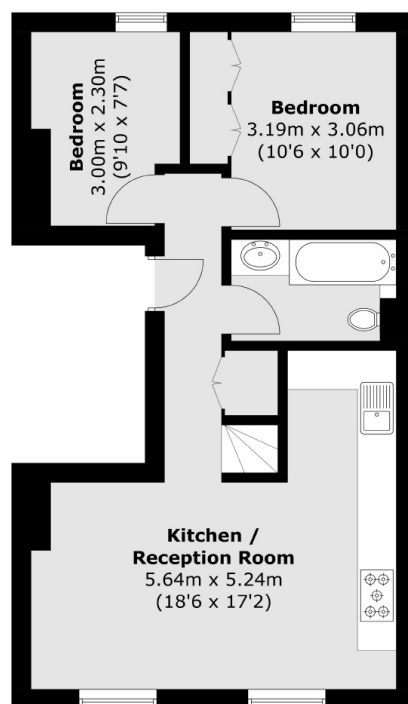
Features

- Two/Three Double Bedrooms
- Large Reception Room
- Modern Kitchen
- Share Of Freehold
- Excellent Location
- Measuring 1,028 Sq Ft

St. John's Hill, London, SW11



Third Floor



Second Floor

Total area (approx.): 95.5 sq. m (1,028.0 sq. ft)