



## Plough Road, SW11

### £525,000

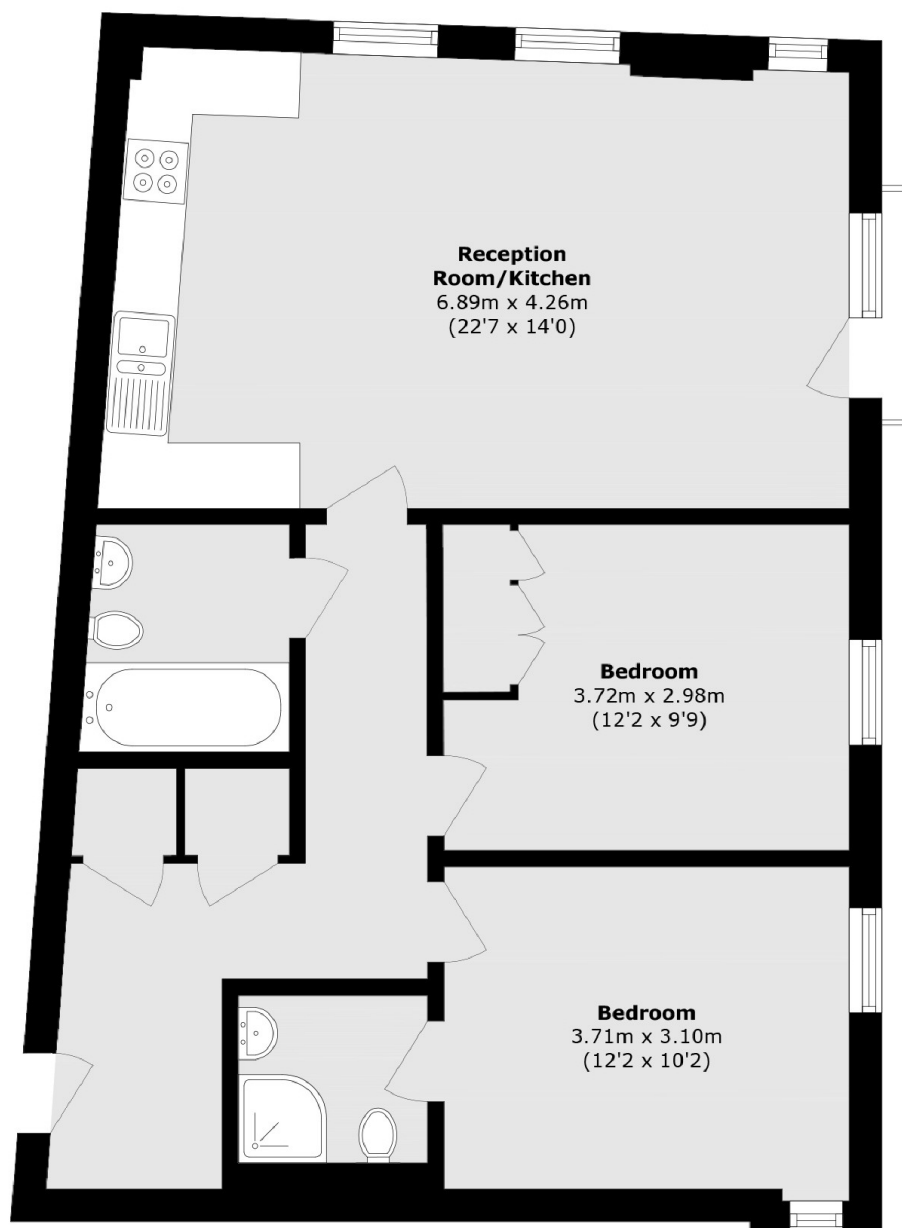
A two double bedroom lateral apartment situated in the sought after Parkside development. Comprising an open plan reception/kitchen, two double bedrooms & two bathrooms. The property further benefits from a concierge, allocated parking, has vaulted ceilings & is being sold chain free.

Parkside is located almost equidistant between Wandsworth Common, Clapham Common and the green spaces of Battersea Park. Transport links are excellent with Clapham Junction around the corner to take you to the city in minutes and the amenities of St. Johns Hill/Road and Northcote Road are a short stroll away. The beautiful river walks along the Thames are around the corner.

### Features

- Open Plan Reception/Kitchen
- Two Double Bedrooms
- Two Bathrooms
- Vaulted Ceilings
- Concierge
- Chain Free

# Plough Road, Battersea, SW11



Total area (approx.): 72.0 sq. m (775.0 sq. ft)

## Dexters

Northcote Road  
93 St. John's Road  
London  
SW11 1QY  
Sales  
020 7483 6333

Energy Rating: B. We aim to make our particulars both accurate and reliable. However they are not guaranteed; nor do they form part of an offer or contract. If you require clarification on any points then please contact us, especially if you're traveling some distance to view. Please note that appliances and heating systems have not been tested and therefore no warranties can be given as to their good working order.

 **RICS** | Regulated  
Estate Agent  
and Letting Agent

[dexters.co.uk](https://www.dexters.co.uk)