



Home Road, SW11

£1,200,000

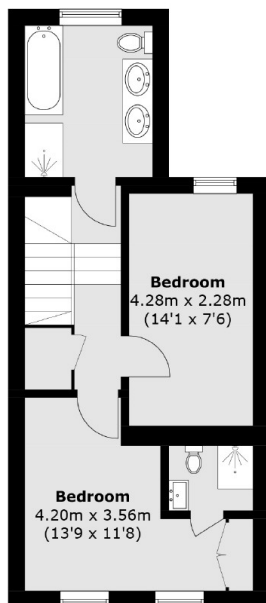
An exceptional four double bedroom freehold home measuring close to 1,300 sq ft over three floors on the sought after Home Road. The property comprises of a large double reception room, modern kitchen, four bathrooms, additional storage & private west facing garden.

Home Road a sought after road near the River Thames in the heart of Battersea. Located conveniently for Battersea Park as well as easy access to the Kings Road in Chelsea. Clapham Junction railway station is also a short walk away.

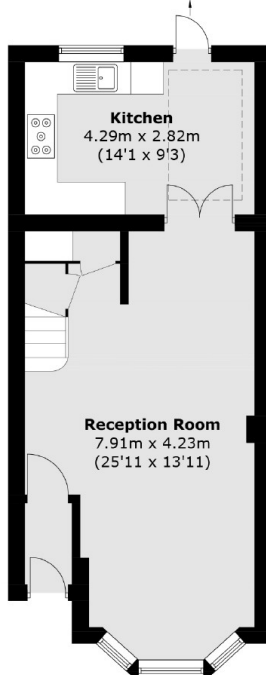
Features

- Freehold Home
- Four Double Bedrooms
- Four Bathrooms
- Private Garden
- Chain Free

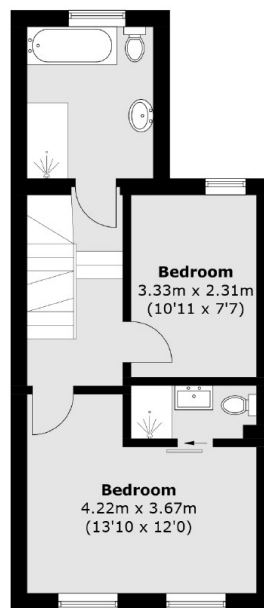
Home Road, London, SW11



Second Floor
To Garden



Ground Floor



First Floor

Total area (approx.): 120.7 sq. m (1,299.2 sq. ft)