



Mysore Road, SW11
£650,000

Dexters



Mysore Road, SW11

A beautiful top floor period conversion located on the sought after Mysore Road. Arranged to include a large open plan reception/kitchen/dining, two even sized double bedrooms & family bathroom. The property benefits further from a spacious, private West facing roof terrace as well as owning a share of the freehold.

As you head into the property you are greeted with a spacious, bright and airy open plan reception room with plenty of space for multiple comfortable seating areas and dining. The modern kitchen is well located and has integrated appliances. The large West facing roof terrace can be found towards the rear of the property making this entire floor a great space for entertaining and relaxing alike. There are two well proportioned double bedrooms with bespoke built in storage and a family bathroom completes the accommodation.

Mysore Road is a quiet tree lined road moments from Clapham Junction and Lavender Hill with its array of cafes, shops, gyms and restaurants and also the vibrant and trendy boutique shops and bars of Northcote Road are a short walk away.

Features

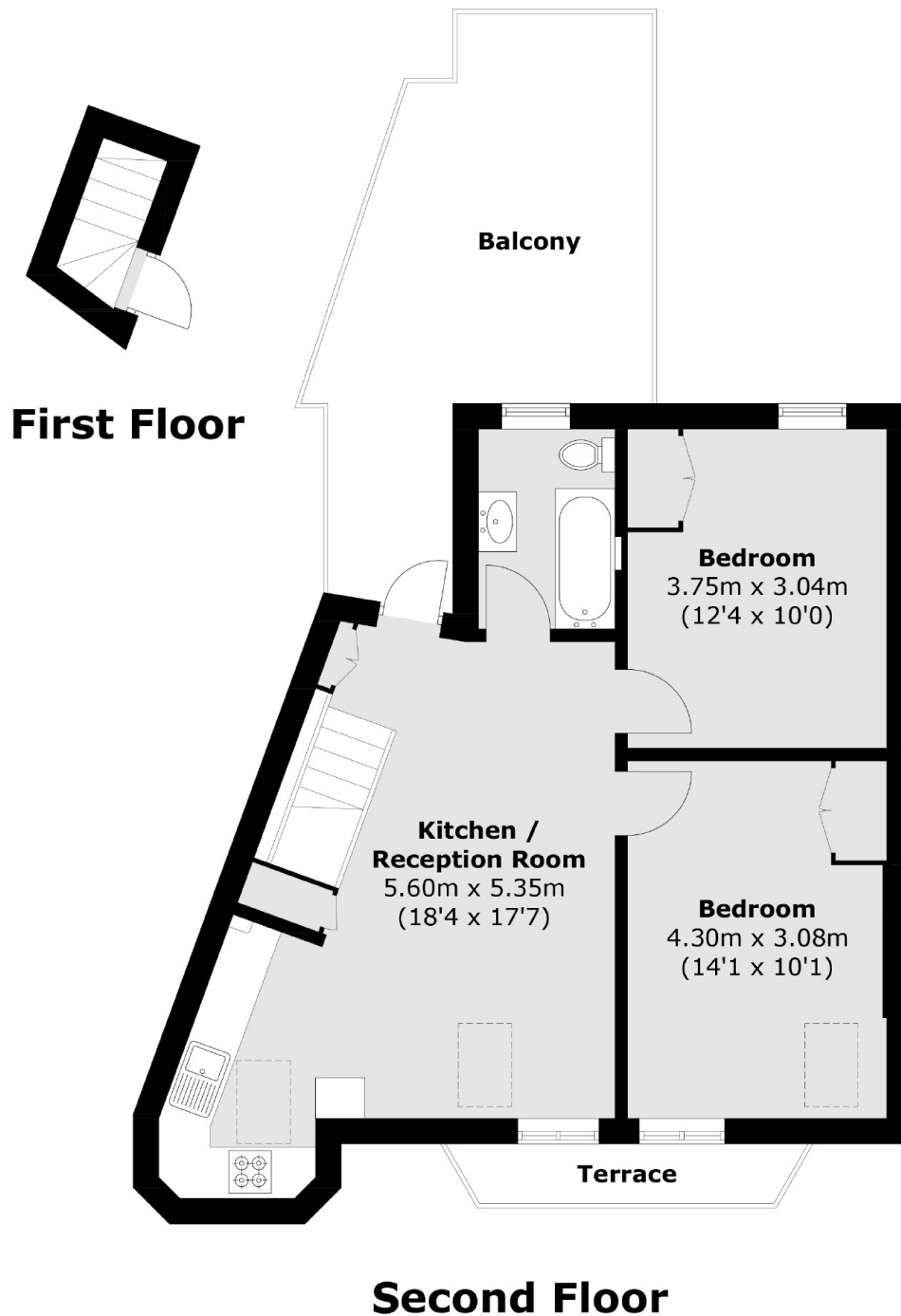
- Open Plan Reception/Kitchen
- Two Double Bedrooms
- Family Bathroom
- Private West Facing Terrace
- Share Of Freehold
- Superb Location







**Mysore Road,
London, SW11**



Total area (approx.): 57.5 sq. m (618.8 sq. ft)
Balcony / Terrace: 21.2 sq. m (228.1 sq. ft)

Dexters

Northcote Road
93 St. John's Road
London
SW11 1QY
Sales
020 7483 6333

Energy Rating: D. We aim to make our particulars both accurate and reliable. However they are not guaranteed; nor do they form part of an offer or contract. If you require clarification on any points then please contact us, especially if you're traveling some distance to view. Please note that appliances and heating systems have not been tested and therefore no warranties can be given as to their good working order.

RICS | Regulated
Estate Agent
and Letting Agent

dexters.co.uk