



**Albert Bridge Road, SW11**  
**£575,000**

**Dexters**



## Albert Bridge Road, SW11

A spacious one double bedroom top floor apartment set in a beautiful Victorian building situated on the sought after Albert Bridge Road. The apartment comprises of a spacious reception room, adjoining kitchen, dining room, double bedroom and modern bathroom. The property benefits further from a communal garden, has a share of the freehold, can be turned into a two double bedroom apartment with minimal work and is moments from Battersea Park & Battersea Power Station.

As you enter through the front door you are greeted with a very spacious reception room with dual aspect windows, flooding the property with natural light. The adjoining kitchen is located just behind with integrated appliances and the dining area is located through the hallway making this space a great area for relaxing and entertaining alike. The modern bathroom is located to the left of the hallway and towards the rear you have a double bedroom with bespoke built in storage.

Albert Bridge Road offers excellent transport links to the rest of London. The nearby overground provides access into Waterloo & Victoria with the nearby tube (Northern Line) getting you into the City & Central London. Also nearby are a number of bus routes to Kensington High Street, Marble Arch, Sloane Sq & Knightsbridge.

### Features

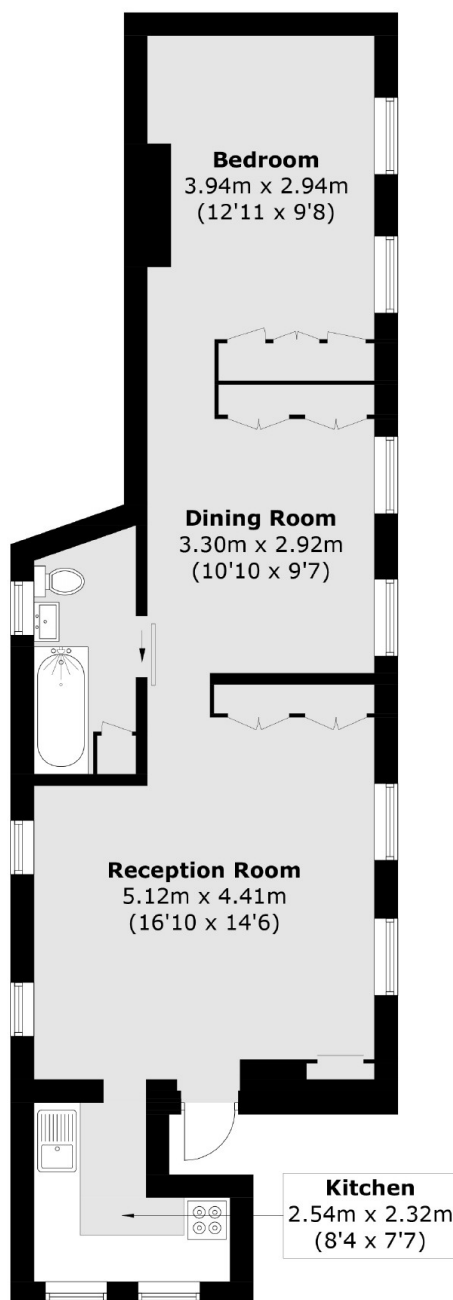
- Bright & Airy Top Floor Flat
- One Double Bedroom
- Potential Second Bedroom
- Modern Kitchen
- Communal Garden
- Share of Freehold







# Albert Bridge Road, London, SW11



Total area (approx.): 55.3 sq. m (595.2 sq. ft)

## Dexters

Northcote Road  
93 St. John's Road  
London  
SW11 1QY  
Sales  
020 7483 6333

Energy Rating: . We aim to make our particulars both accurate and reliable. However they are not guaranteed; nor do they form part of an offer or contract. If you require clarification on any points then please contact us, especially if you're traveling some distance to view. Please note that appliances and heating systems have not been tested and therefore no warranties can be given as to their good working order.

 **RICS** | Regulated  
Estate Agent  
and Letting Agent

[dexters.co.uk](https://www.dexters.co.uk)