



Thorndean Street, SW18

£1,400,000

Dexters



Thorndean Street, SW18

An exceptional four double bedroom freehold home measuring just shy of 1,400 Sq Ft on the sought after Thorndean Street in the heart of Earlsfield. The property comprises of a double reception room, eat-in kitchen, four double bedrooms, two bathrooms, additional WC & private garden. The property benefits further from extension potential into the side return (STPP).

As you enter you are greeted by a warm and welcoming hallway. To the left is a double reception room with high ceilings, multiple comfortable seating areas and bespoke cabinetry. The eat-in kitchen is located to the rear with plenty of space for dining and has integrated appliances making it the perfect area for entertaining. The low maintenance private garden is accessed through the kitchen. On the first floor you have two double bedrooms, the Principal bedroom & family bathroom. On the second floor and into the loft extension you have an additional family bathroom and large double bedroom with plenty of storage.

Thorndean Street is well placed for accessing a wide range of local amenities in Earlsfield, Wandsworth and Balham with Earlsfield station (National Rail) just a short stroll away.

Features

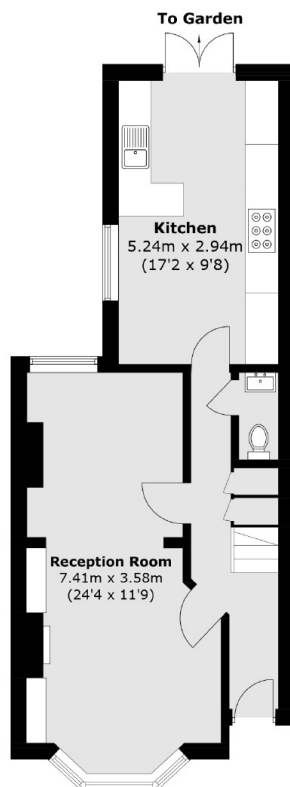
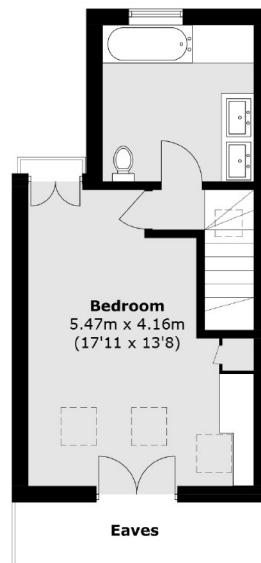
- Freehold Home
- Double Reception Room
- Four Double Bedrooms
- Two Bathrooms & WC
- Private Garden
- Extension Opportunity (STPP)



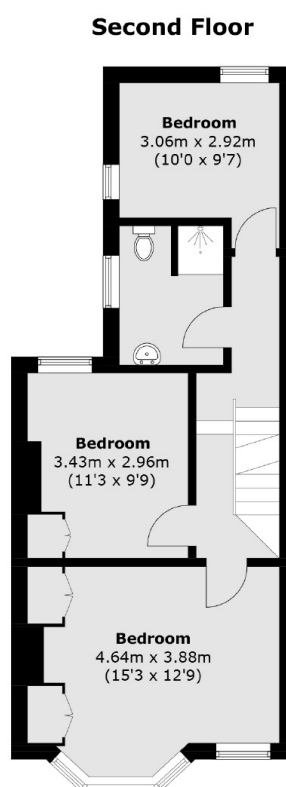




Thorndean Street, London, SW18



Ground Floor



First Floor

Total area (approx.): 128.4 sq. m (1,382 sq. ft)
(Excluding Eaves)

Dexters

Northcote Road
93 St. John's Road
London
SW11 1QY
Sales
020 7483 6333

Energy Rating: . We aim to make our particulars both accurate and reliable. However they are not guaranteed; nor do they form part of an offer or contract. If you require clarification on any points then please contact us, especially if you're traveling some distance to view. Please note that appliances and heating systems have not been tested and therefore no warranties can be given as to their good working order.

 **RICS** | Regulated
Estate Agent
and Letting Agent

[dexters.co.uk](https://www.dexters.co.uk)