



Lavender Hill, SW11

£550,000

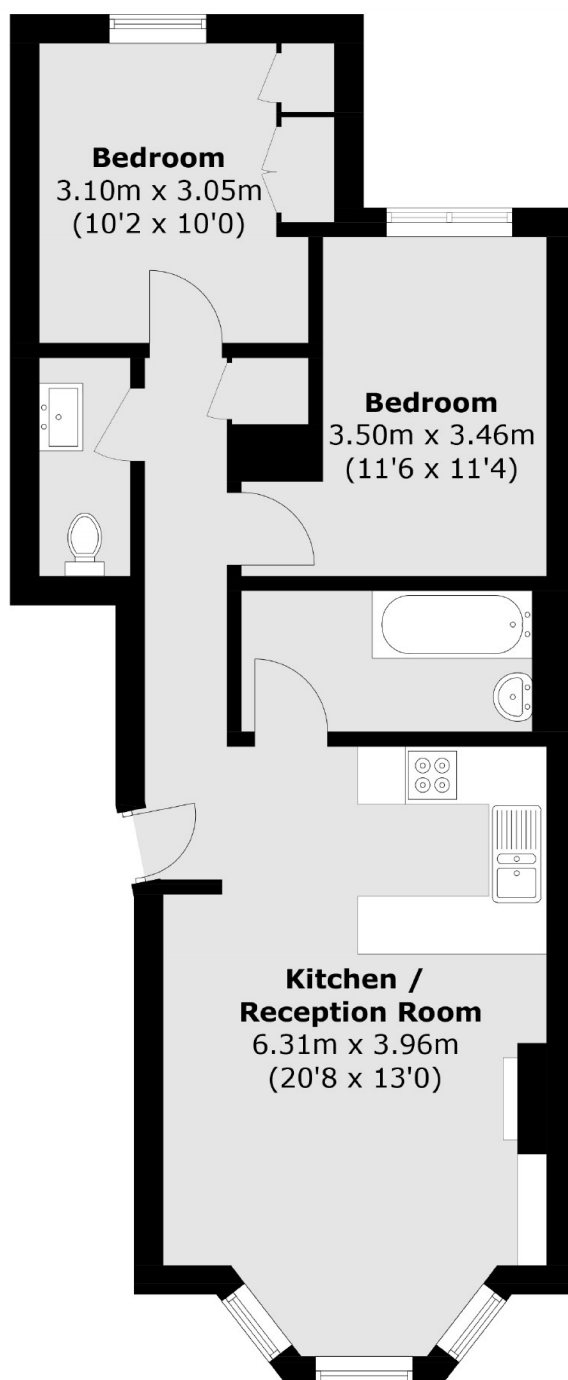
A spacious first floor period conversion measuring over 595 Sq Ft on the popular Lavender Hill. Arranged to include an open plan reception/kitchen with beautiful bay window, two double bedrooms and a family bathroom. The property also benefits from a share of freehold and is being sold chain free.

The property is located on the popular Lavender Hill, moments from the vibrant Northcote Road which offers a good selection of shops, cafés, bars, gyms and restaurants. Clapham Common & Clapham Junction station are a short stroll away.

Features

- Victorian Conversion
- Two Double Bedrooms
- Open Plan Kitchen/Reception
- Family Bathroom
- Share Of Freehold
- Chain Free

Lavender Hill, London, SW11



Total area (approx.): 55.3 sq. m (595.2 sq. ft)

Dexters

Northcote Road
93 St. John's Road
London
SW11 1QY
Sales
020 7483 6333

Energy Rating: . We aim to make our particulars both accurate and reliable. However they are not guaranteed; nor do they form part of an offer or contract. If you require clarification on any points then please contact us, especially if you're traveling some distance to view. Please note that appliances and heating systems have not been tested and therefore no warranties can be given as to their good working order.

 **RICS** | Regulated
Estate Agent
and Letting Agent

[dexters.co.uk](https://www.dexters.co.uk)