



## Lavender Hill, SW11

£520,000

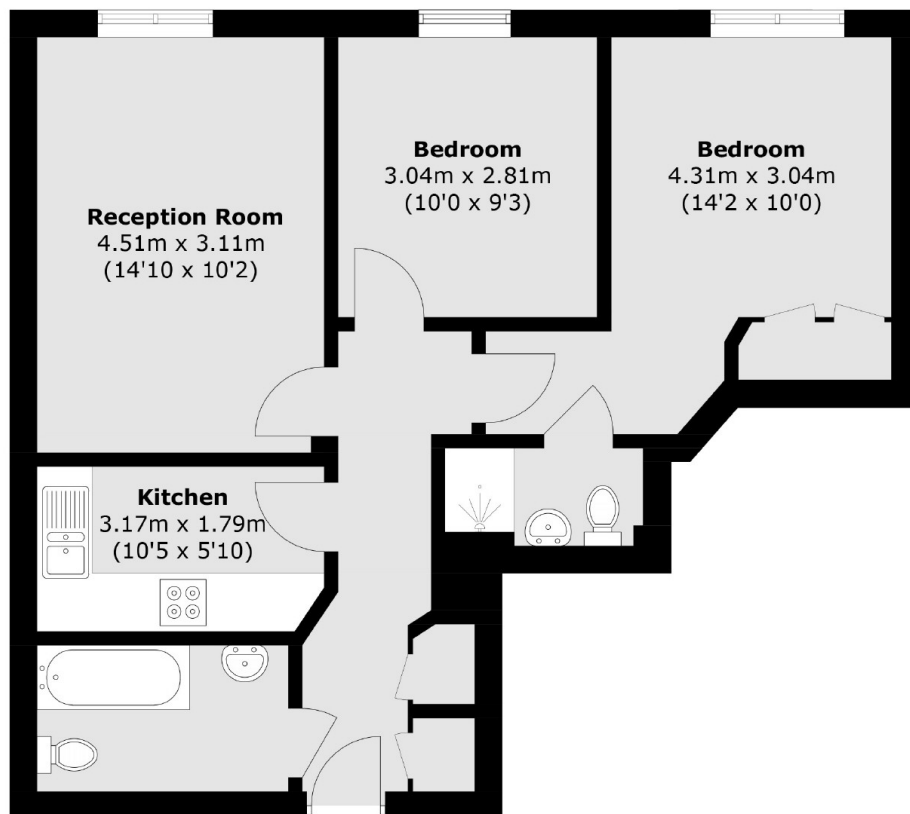
A fantastic two double bedroom apartment in a sought after development on Lavender Hill. The property comprises of a large reception room, separate modern kitchen and two bathrooms including the principal en-suite. The property also benefits from allocated off street parking and is being sold chain free.

Lavender Hill is located near Clapham Old Town and has a good selection of shops, cafés, bars and restaurants on the road itself. It is located between Clapham Common Tube Station and Clapham Junction overground and the green spaces of Clapham Common are a short stroll away.

### Features

- Large Reception Room
- Two Double Bedrooms
- Two Bathrooms
- Allocated Parking
- Superb Location
- Chain Free

# Lavender Hill, London, SW11



Total area (approx.): 59.4 sq. m (639.4 sq. ft)

## Dexters

Northcote Road  
93 St. John's Road  
London  
SW11 1QY  
Sales  
020 7483 6333

Energy Rating: . We aim to make our particulars both accurate and reliable. However they are not guaranteed; nor do they form part of an offer or contract. If you require clarification on any points then please contact us, especially if you're traveling some distance to view. Please note that appliances and heating systems have not been tested and therefore no warranties can be given as to their good working order.

 **RICS** | Regulated  
Estate Agent  
and Letting Agent

[dexters.co.uk](https://www.dexters.co.uk)