

Battersea Rise, SW11

£275,000

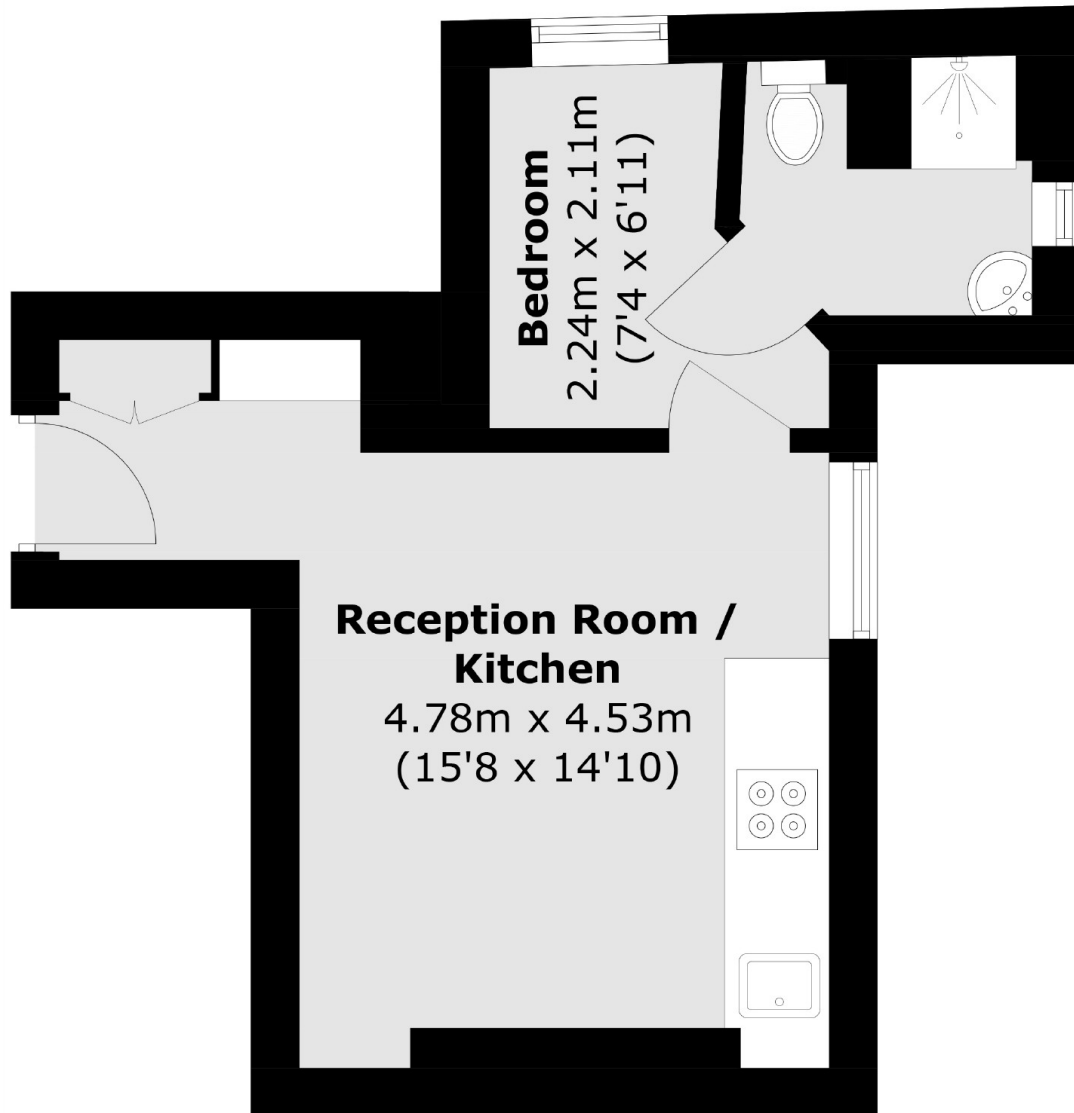
Cash buyers only. A well presented first floor studio apartment set moments from Clapham Junction Station. The property includes an open plan kitchen/living area, bedroom space and bathroom. The property is also being sold chain free.

Battersea Rise is conveniently located for Clapham Junction overground, the green spaces of Clapham Common as well as many shops, restaurants, gyms and bars on Northcote Road and Battersea Rise are nearby.

Features

- Studio Apartment
- Open Plan Living
- Modern Bathroom
- Superb Location
- Chain Free
- Cash Buyers

Battersea Rise, London, SW11



Total area (approx.): 22.1 sq. m (237.9 sq. ft)

Dexters

Northcote Road
93 St. John's Road
London
SW11 1QY
Sales
020 7483 6333

Energy Rating: . We aim to make our particulars both accurate and reliable. However they are not guaranteed; nor do they form part of an offer or contract. If you require clarification on any points then please contact us, especially if you're traveling some distance to view. Please note that appliances and heating systems have not been tested and therefore no warranties can be given as to their good working order.

 **RICS** | Regulated
Estate Agent
and Letting Agent

[dexters.co.uk](https://www.dexters.co.uk)