



**Avery Walk, SW11**  
**£1,400,000**

**Dexters**



## Avery Walk, SW11

Avery Walk has been designed by award-winning developer Fruition Properties. Each home includes a rooftop terrace with far reaching views, taking in some of the capital's most iconic buildings including The Shard. \*\*  
[SHOW HOME PHOTOGRAPHS](#)

Avery Walk is located moments from the north side of Clapham Common, while the wider green spaces of Wandsworth Common and Battersea Park are within easy reach. Clapham Common Underground (Zone 2) and Clapham Junction Rail are located close by, providing easy access into London and beyond.

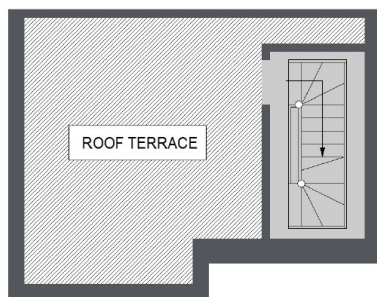
### Features

- Private Mews
- Rooftop Terrace
- Expansive Living Spaces
- On-Site Parking
- Exceptional Views
- High Specification

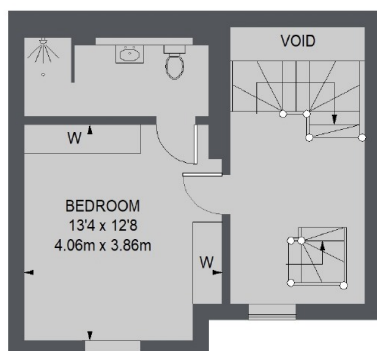




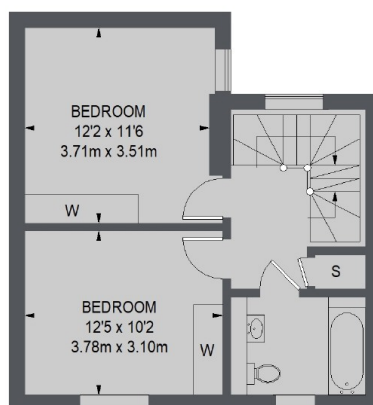
# Avery Walk, London, SW11



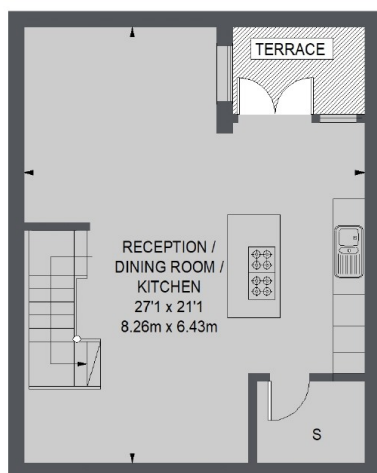
**ROOF TERRACE**



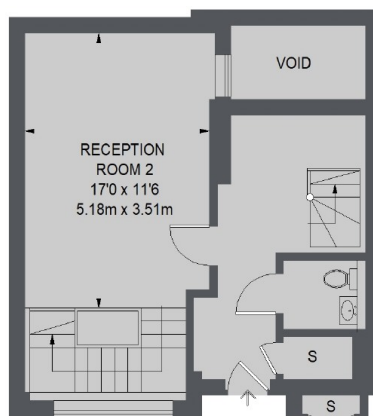
**SECOND FLOOR**



**FIRST FLOOR**



**LOWER GROUND FLOOR**



**GROUND FLOOR**

**TOTAL APPROX. FLOOR AREA  
(EXCLUDING VOID)**  
1741 SQ. FT. ( 161.77 SQ. M.)