



## Pembrook Mews, SW11

### £675,000

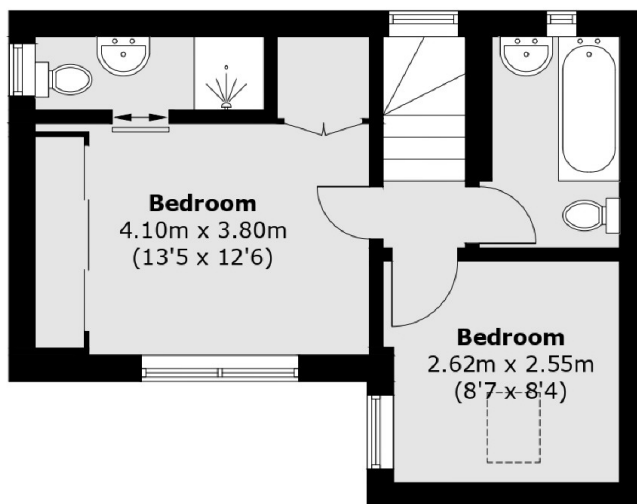
A stunning freehold mews house within the popular Pembrook Mews. The property comprises of a bright & airy reception room with adjoining modern kitchen, two double bedrooms & two bathrooms (inc en-suite). The property further benefits from communal outside space, off street parking and is being sold chain free.

Pembrook Mews is a quiet residential mews located between St. John's Hill Grove & Cologne Road. It's a short stroll away from Clapham Junction and both Clapham and Wandsworth Commons. The vast array of local amenities located on St. John's Hill and Northcote Road are also nearby.

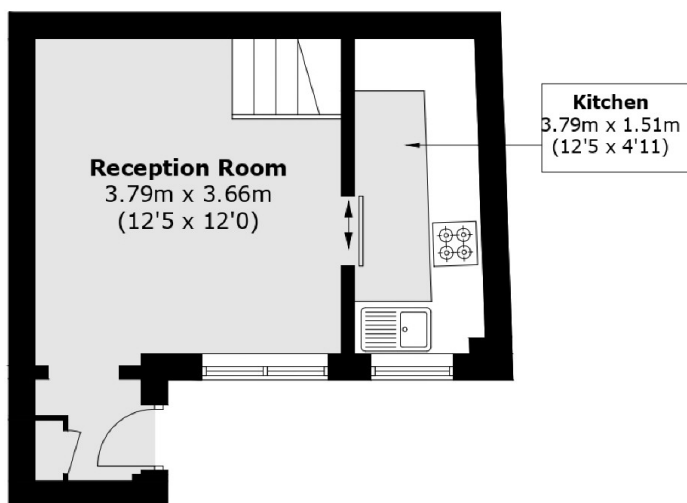
### Features

- Freehold Mews House
- Private Front Door
- Two Double Bedrooms
- Off Street Parking
- Chain Free
- Superb Location

# Pembroke Mews, London, SW11



**First Floor**



**Ground Floor**

Total area (approx.): 48.5 sq. m (522.0 sq. ft)