



Lurline Gardens, SW11

£700,000

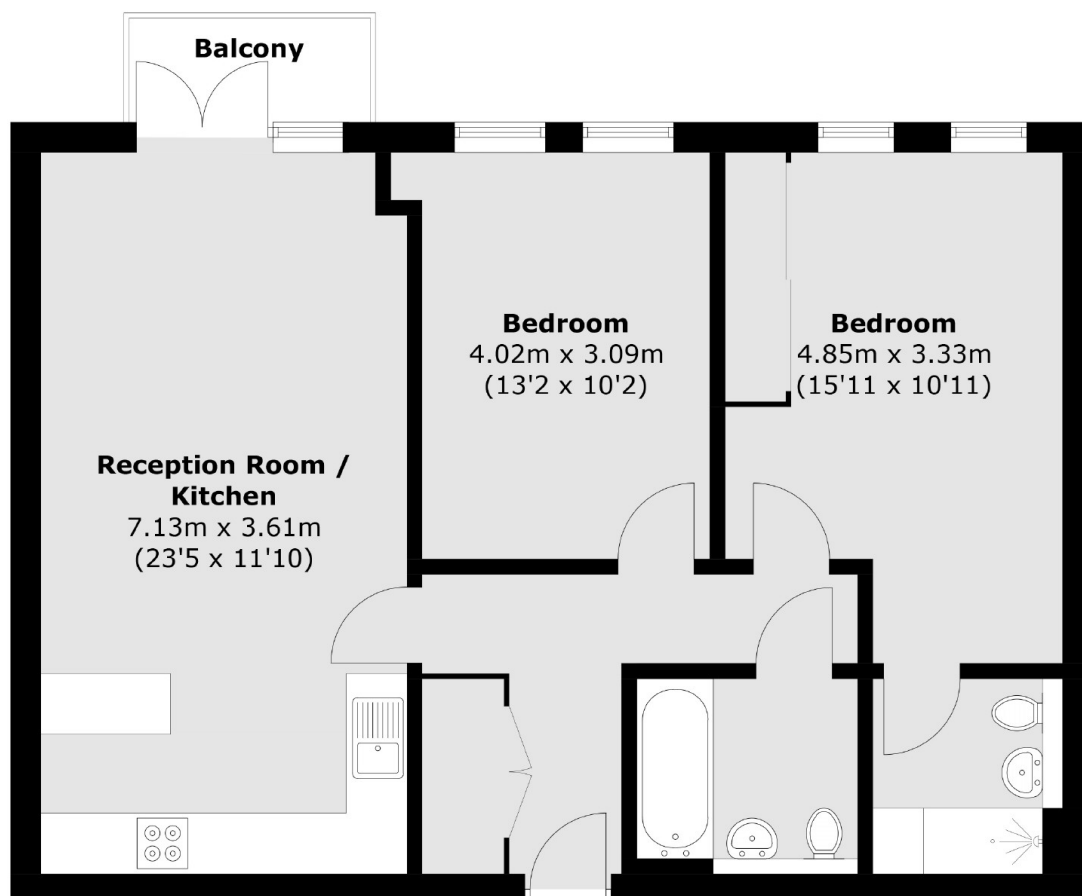
A modern two double bedroom apartment in the sought after Drapers Court development on Lurline Gardens. The property comprises of a large open plan reception/kitchen, two double bedrooms, two bathrooms (Inc en-suite) & private balcony. The property benefits further from a concierge, communal roof terraces, communal gardens, external storage space & is being sold chain free.

Lurline Gardens offers excellent transport links to the rest of London. The nearby overground provides access into Waterloo & Victoria with the nearby tube (Northern Line) getting you into the City & Central London. Kings Road, the iconic Battersea Power Station and Battersea Park are moments away.

Features

- Open Plan Reception/Kitchen
- Two Double Bedrooms
- Two Bathrooms
- Private Balcony
- Concierge
- Chain Free

Lurline Gardens, London, SW11



Total area (approx.): 72.3 sq. m (778.2 sq. ft)
Balcony: 2.5 sq.m (26.9 sq.ft)

Dexters

Northcote Road
93 St. John's Road
London
SW11 1QY
Sales
020 7483 6333

Energy Rating: B. We aim to make our particulars both accurate and reliable. However they are not guaranteed; nor do they form part of an offer or contract. If you require clarification on any points then please contact us, especially if you're traveling some distance to view. Please note that appliances and heating systems have not been tested and therefore no warranties can be given as to their good working order.

 **RICS** | Regulated
Estate Agent
and Letting Agent

[dexters.co.uk](https://www.dexters.co.uk)