



Lavender Hill, SW11

£550,000

A fantastic two double bedroom first floor apartment in a sought after development on Lavender Hill measuring over 783 Sq Ft. The property comprises of a large reception/dining room, separate modern kitchen with integrated appliances and two bathrooms including the principal en-suite.

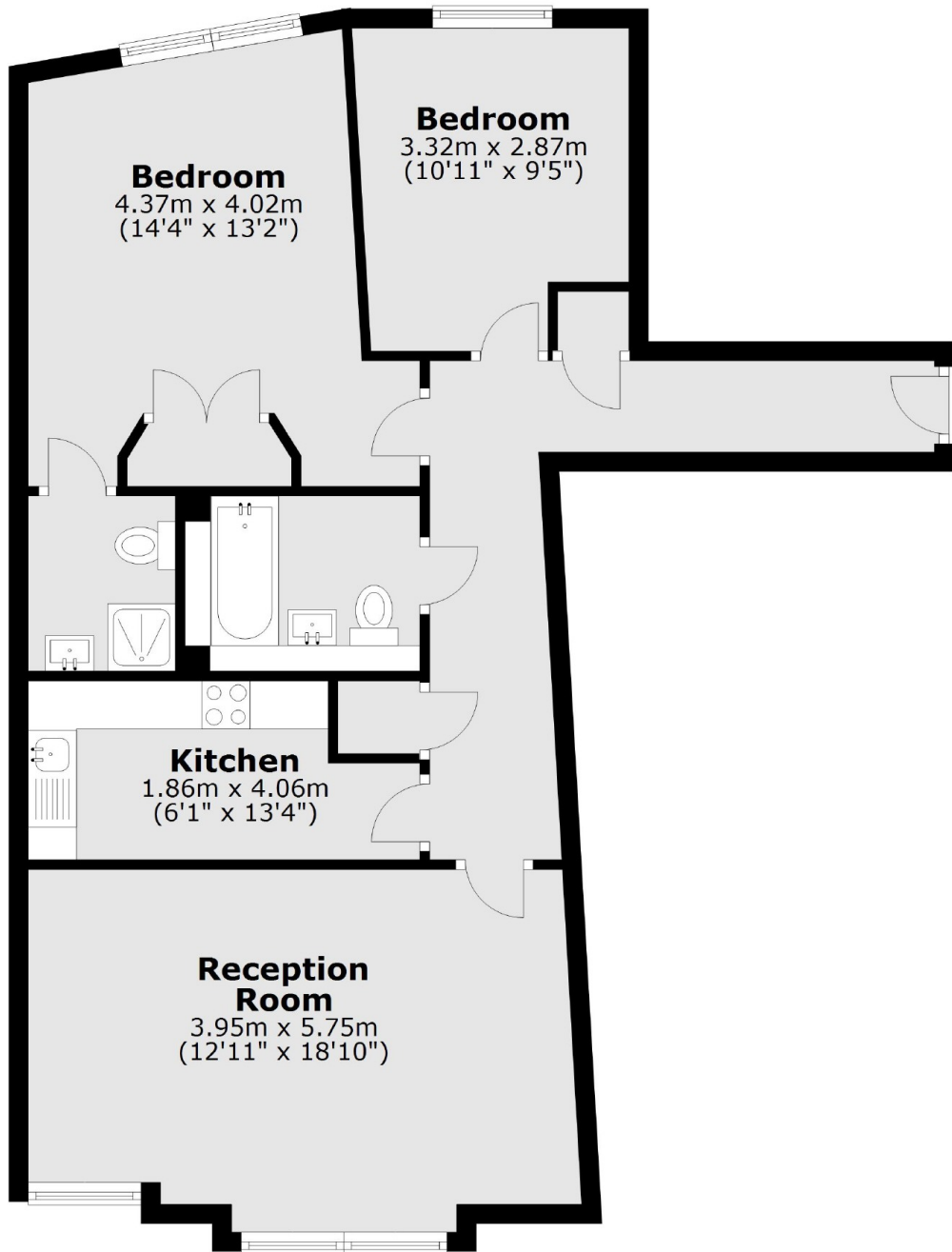
Lavender Hill is located near Clapham Old Town and has a good selection of shops, cafés, bars and restaurants on the road itself. It is located between Clapham Common Tube Station and Clapham Junction overground and the green spaces of Clapham Common are a short stroll away.

Features

- Large Reception Room
- Two Double Bedrooms
- Two Bathrooms
- Measuring Over 783 Sq Ft
- Superb Location
- Chain Free

Lavender Hill, London, SW11

First Floor



Total area: approx. 72.8 sq. metres (783.2 sq. feet)

Dexters

Northcote Road
93 St. John's Road
London
SW11 1QY
Sales
020 7483 6333

Energy Rating: B. We aim to make our particulars both accurate and reliable. However they are not guaranteed; nor do they form part of an offer or contract. If you require clarification on any points then please contact us, especially if you're traveling some distance to view. Please note that appliances and heating systems have not been tested and therefore no warranties can be given as to their good working order.

 **RICS** | Regulated
Estate Agent
and Letting Agent

[dexters.co.uk](https://www.dexters.co.uk)