



Longbeach Road, SW11
£1,000,000

Dexters



Longbeach Road, SW11

An exceptional top floor Victorian conversion measuring over 1,272 Sq Ft. Comprising a large reception room, a separate kitchen/dining area, three double bedrooms, two bathrooms & private roof terrace. The property benefits further from owing the full freehold and is being sold chain free.

As you enter the property you have the kitchen to the right hand side and the dining area to the left. Straight ahead you have a private roof terrace making this part of the first floor a great entertaining area. The reception room is located at the front of the property with beautiful wooden floors and high ceilings. There is a real sense of space within the flat due to it being over 1,272 sq ft and having large amounts of useable lateral living areas. A large double bedroom is also found at the front of the property with built in storage. Upstairs you have a further two spacious double bedrooms (one with en-suite) and a family bathroom.

Longbeach Road is a sought after quiet residential street located North of Clapham Common. It is situated in the catchment areas for some of the best schools; Belleville Primary School, Eaton House, Parkgate House, and Belleville Wix Academy.

Features

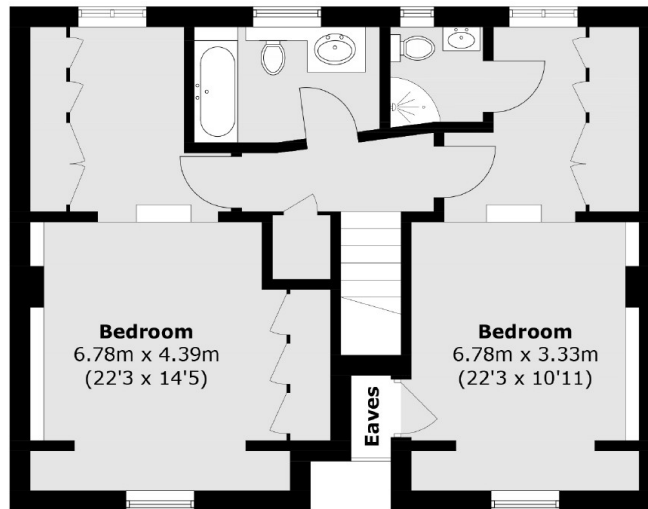
- Victorian Conversion
- Three Double Bedrooms
- Two Bathrooms
- Private Roof Terrace
- Owns The Full Freehold
- Measuring Over 1,272 Sq Ft



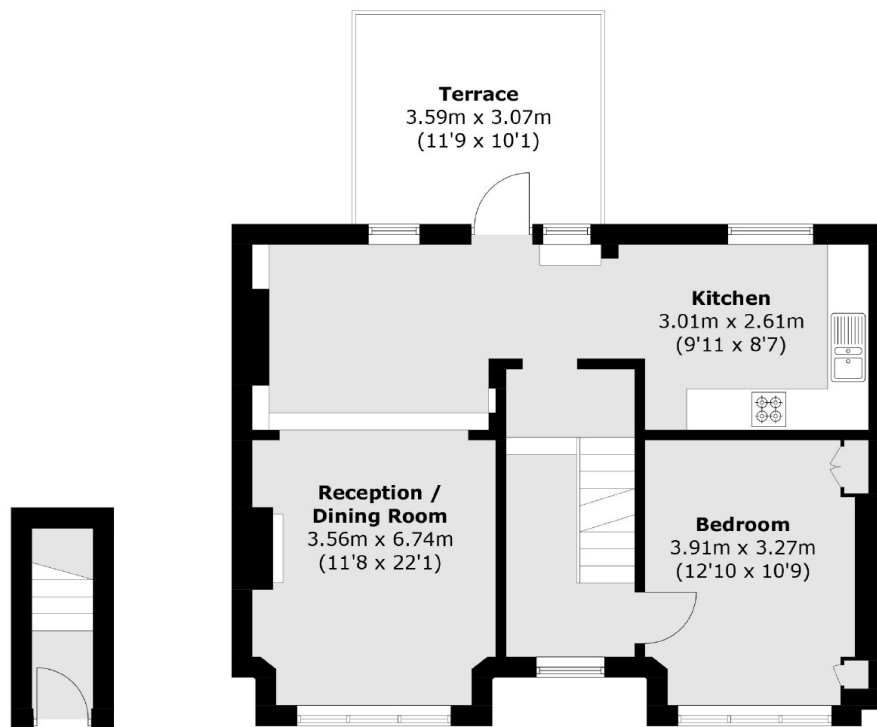




Longbeach Road, London, SW11



Second Floor



Ground Floor

First Floor

Total area (approx.): 118.2 sq. m (1,272.3 sq. ft)
(Excluding Eaves)

Terrace : 11.0 sq. m (118.4 sq. ft)