



Spencer Park, SW18

£450,000

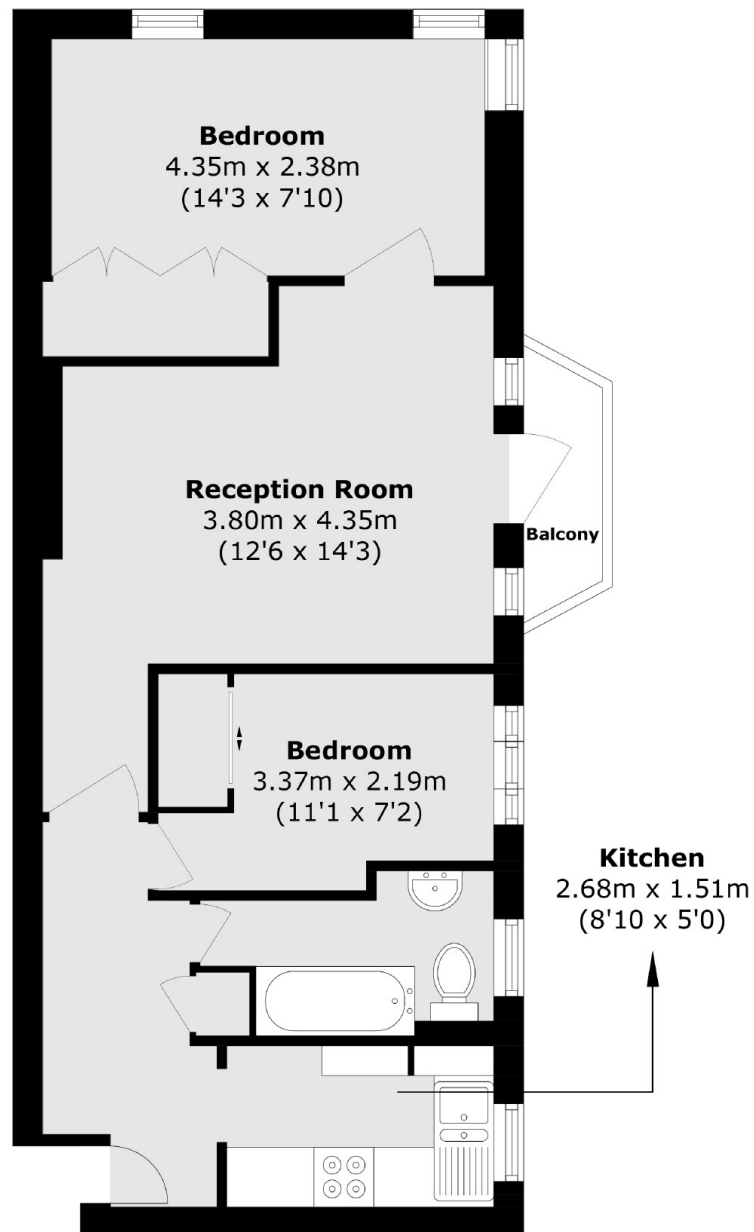
A beautifully presented bright and spacious two double bedroom purpose built apartment with private balcony. The property comprises of a reception room, separate kitchen, two double bedrooms and a family bathroom. The property further benefits from allocated off street parking, communal garden, a share of the freehold and is being sold chain free.

Spencer Park is close to the green spaces of Wandsworth Common and Clapham Common, Clapham Junction station and plenty of shops bars and restaurants on Northcote Road, St Johns Hill and in Wandsworth Town.

Features

- Two Double Bedrooms
- Private Balcony
- Allocated Off Street Parking
- Communal Garden
- Share Of Freehold
- Chain Free

Spencer Park, London, SW18



Total area (approx.): 52.6 sq. m (566.1 sq. ft)

Balcony area (approx.): 1.8 sq. m (19.3 sq. ft)

Dexters

Northcote Road
93 St. John's Road
London
SW11 1QY
Sales
020 7483 6333

Energy Rating: D. We aim to make our particulars both accurate and reliable. However they are not guaranteed; nor do they form part of an offer or contract. If you require clarification on any points then please contact us, especially if you're traveling some distance to view. Please note that appliances and heating systems have not been tested and therefore no warranties can be given as to their good working order.

 **RICS** | Regulated
Estate Agent
and Letting Agent

[dexters.co.uk](https://www.dexters.co.uk)