



Clapham Common North Side, £785,000

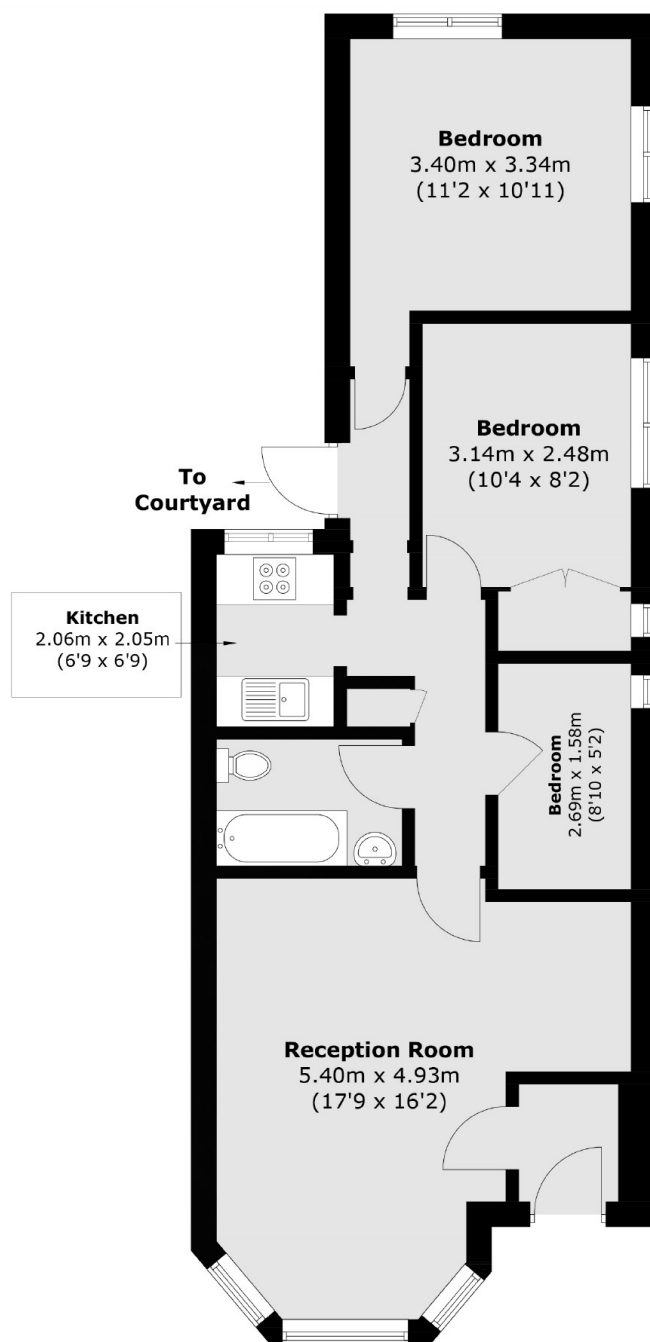
A contemporary Victorian conversion situated on the sought after Clapham Common North Side opposite the Common. Presented in immaculate order throughout, comprising of an oversized reception room with high ceilings and private courtyard, a separate kitchen, three bedrooms & family bathroom. The property benefits further from being sold chain free and has a garage available under separate negotiation.

Clapham Common North Side overlooks Clapham Common and has convenient access to the bars and restaurants of both Northcote Road and Clapham Old Town. Clapham Junction railway station & Clapham Common Underground station are a short stroll away.

Features

- Three Bedrooms
- Family Bathroom
- Oversized Reception Room
- Fully Refurbished
- Private Courtyard
- Chain Free

Clapham Common North Side, London, SW4



Ground Floor

Total area (approx.): 62.4 sq. m (671.7 sq. ft)

Dexters

Northcote Road
93 St. John's Road
London
SW11 1QY
Sales
020 7483 6333

Energy Rating: . We aim to make our particulars both accurate and reliable. However they are not guaranteed; nor do they form part of an offer or contract. If you require clarification on any points then please contact us, especially if you're traveling some distance to view. Please note that appliances and heating systems have not been tested and therefore no warranties can be given as to their good working order.

 **RICS** | Regulated
Estate Agent
and Letting Agent

[dexters.co.uk](https://www.dexters.co.uk)