



Latchmere Road, SW11

£650,000

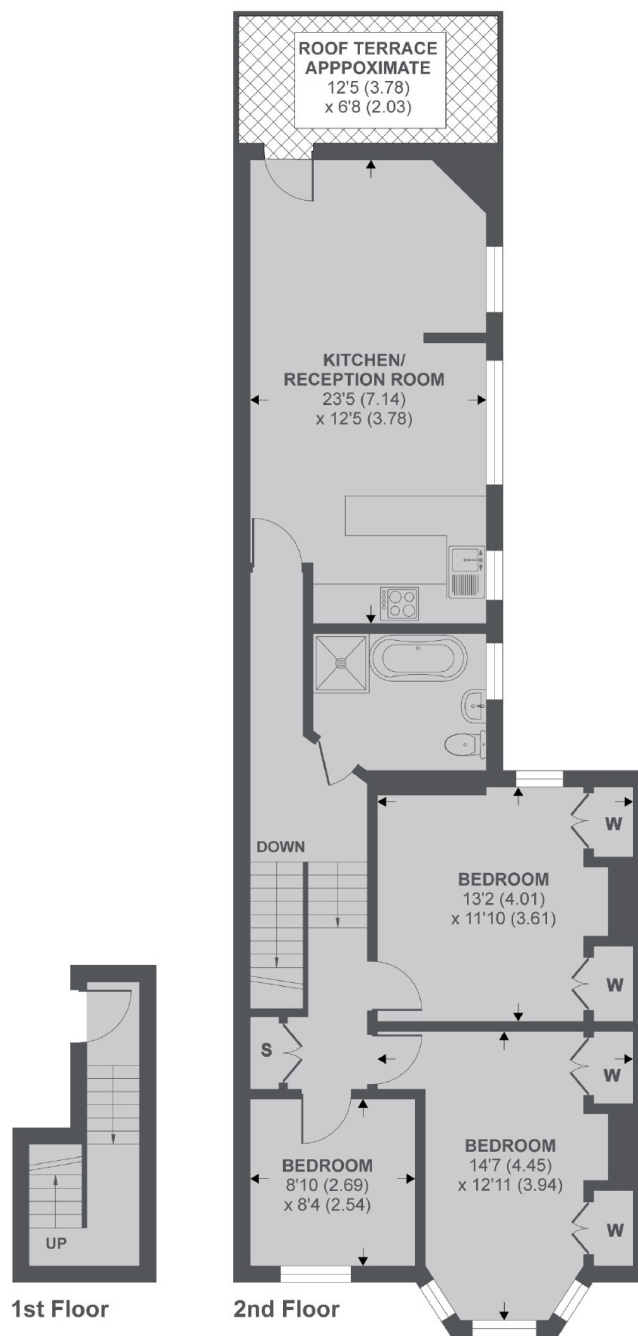
A top floor apartment with three double bedrooms measuring 918 Sq Ft. The property has a large open plan reception/kitchen/dining room, family bathroom and a private roof terrace. The property also benefits from owning a share of the freehold, has extension potential into the loft (STPP) and is being sold chain free.

Latchmere Road is perfect for commuting from Clapham Junction into Central London and to Gatwick Airport. The green spaces of Clapham Common and Battersea Park are nearby, as are plenty of local pubs, restaurants and shops.

Features

- Top Floor Conversion
- Open Plan Reception/Kitchen
- Three Double Bedrooms
- Private Roof Terrace
- Share Of Freehold
- Chain Free

Latchmere Road, London, SW11



Latchmere Road, SW11

APPROX FLOOR AREA 918 SQ.FT 85.2 SQ.M

Copyright nichecom.co.uk 2018 REF : 318110

Dexters

Northcote Road
93 St. John's Road
London
SW11 1QY
Sales
020 7483 6333

Energy Rating: C. We aim to make our particulars both accurate and reliable. However they are not guaranteed; nor do they form part of an offer or contract. If you require clarification on any points then please contact us, especially if you're traveling some distance to view. Please note that appliances and heating systems have not been tested and therefore no warranties can be given as to their good working order.

 **RICS** | Regulated
Estate Agent
and Letting Agent

dexters.co.uk