



Watford Close, SW11

£500,000

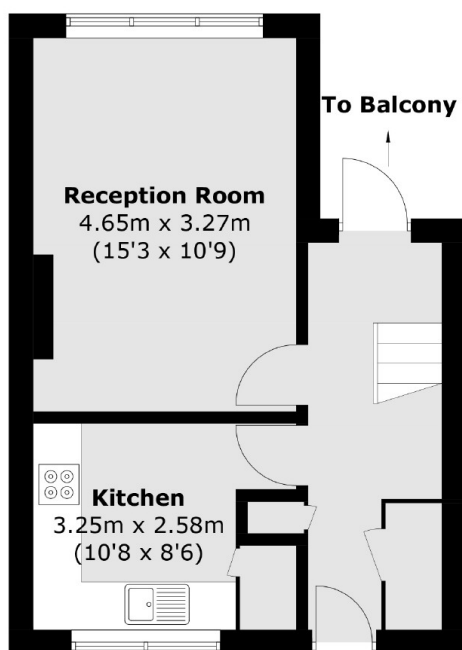
A rarely available three double bedroom apartment measuring over 818 sq ft situated on the sought after Watford Close. Comprising a spacious reception room, a well-equipped kitchen, three bedrooms, family bathroom & private balcony. The property is being sold chain free.

Watford Close is a sought after development near the River Thames. Located conveniently for Battersea Park as well as easy access to the Kings Road in Chelsea. Clapham Junction railway station is also a short walk away.

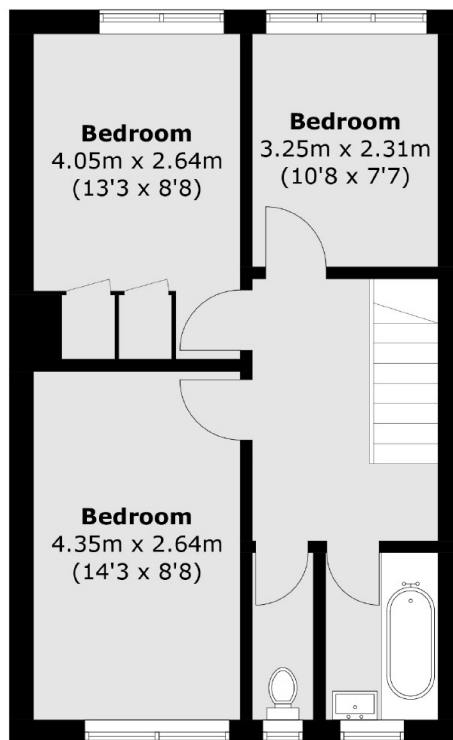
Features

- Large Reception Room
- Three Bedrooms
- Private Balcony
- Measuring Over 818 Sq Ft
- Superb Location
- Chain Free

Watford Close, London, SW11



Ground Floor



First Floor

Total area (approx.): 76.0 sq. m (818.1 sq. ft)