



Thirsk Road, SW11

£400,000

A split level apartment set in a beautiful Victorian building. Accommodation includes an open plan reception room/kitchen, double bedroom and a modern bathroom. The property also benefits from a share of the freehold and is being sold chain free.

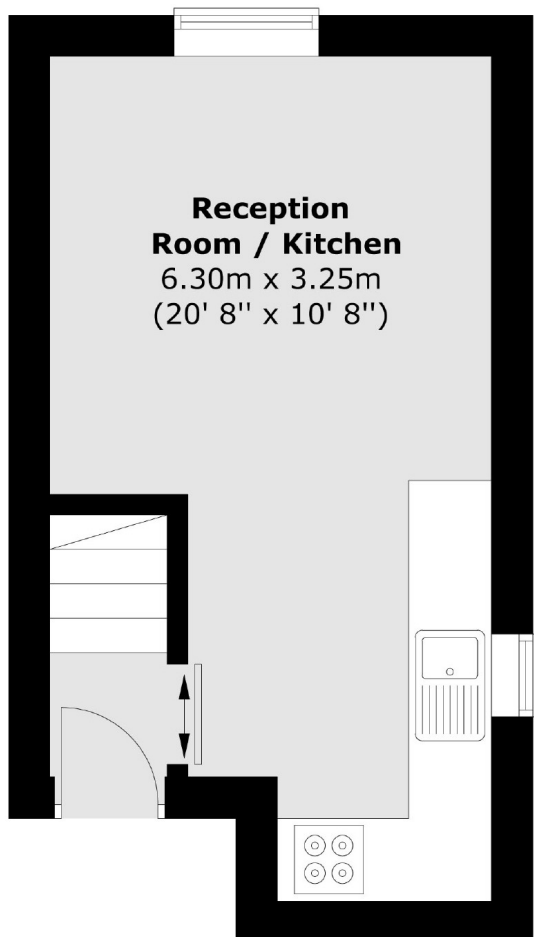
Thirsk Road is a sought after quiet residential street located North of Clapham Common. It is situated in the catchment areas for some of the best schools; Belleville Primary School, Eaton House, Parkgate House, and Belleville Wix Academy.

Features

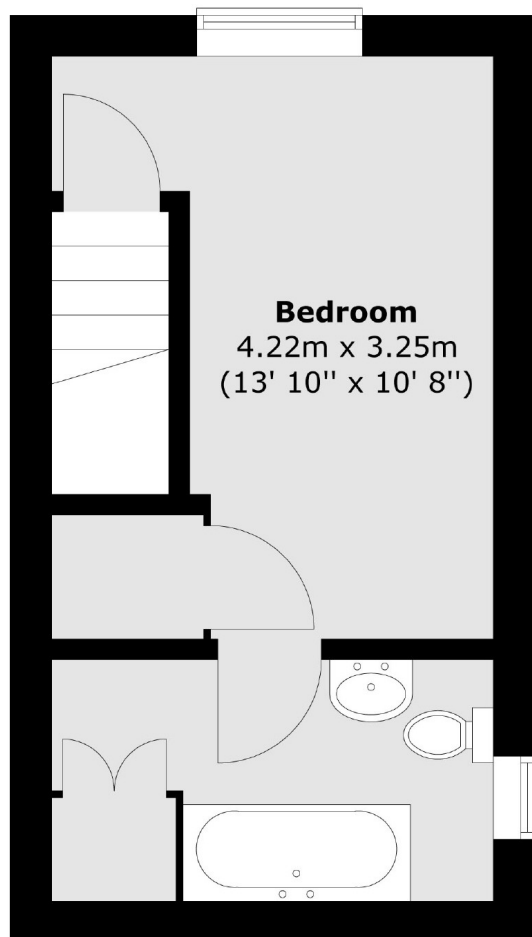
- Period Conversion
- Open Plan Reception/Kitchen
- Double Bedroom
- Excellent Location
- Share Of Freehold
- Chain Free

Thirsk Road, London, SW11

First Floor



Second Floor



Total area (approx.) : 39.1 sq. m (421 sq. ft)