



Clapham Common North Side, £879,990

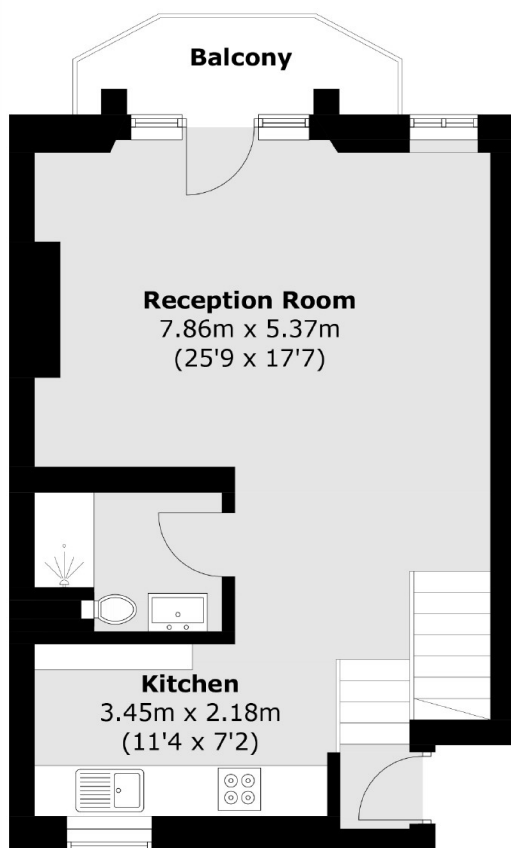
A contemporary, split level Victorian apartment situated on the sought after Clapham Common North Side opposite the Common. Presented in immaculate order throughout, comprising of an oversized reception room with high ceilings and private balcony overlooking the Common itself, a separate kitchen, three double bedrooms & two bathrooms. The property benefits further from being sold chain free and has a garage available under separate negotiation.

Clapham Common North Side overlooks Clapham Common and has convenient access to the bars and restaurants of both Northcote Road and Clapham Old Town. Clapham Junction railway station & Clapham Common Underground station are a short stroll away.

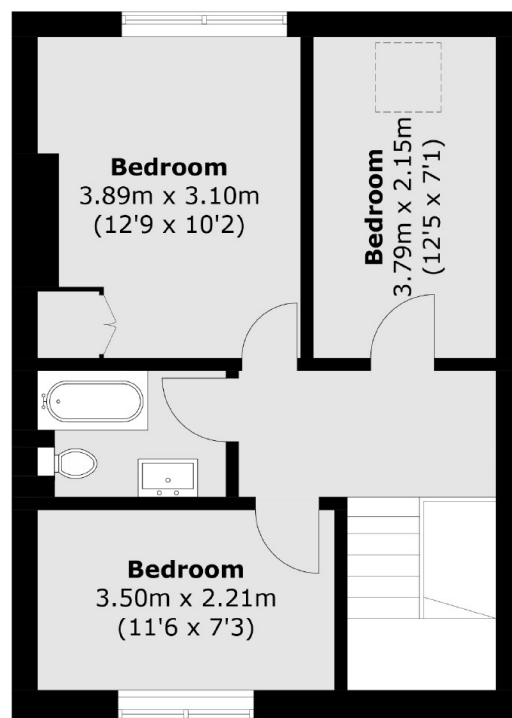
Features

- Three Double Bedrooms
- Two Bathrooms
- Oversized Reception Room
- Fully Refurbished
- Private Balcony
- Chain Free

Clapham Common North Side, London, SW4



First Floor



Second Floor

Total area (approx.): 83.7 sq. m (901.0 sq. ft)
Balcony area (approx.): 3.8 sq. m (40.9 sq. ft)