

## Clapham Common North Side, £545,000

A contemporary, split level Victorian apartment situated on the sought after Clapham Common North Side opposite the Common. Presented in immaculate order throughout, comprising of an open plan reception/ kitchen, one double bedroom & family bathroom. The property benefits further from being sold chain free and has a garage available under separate negotiation.

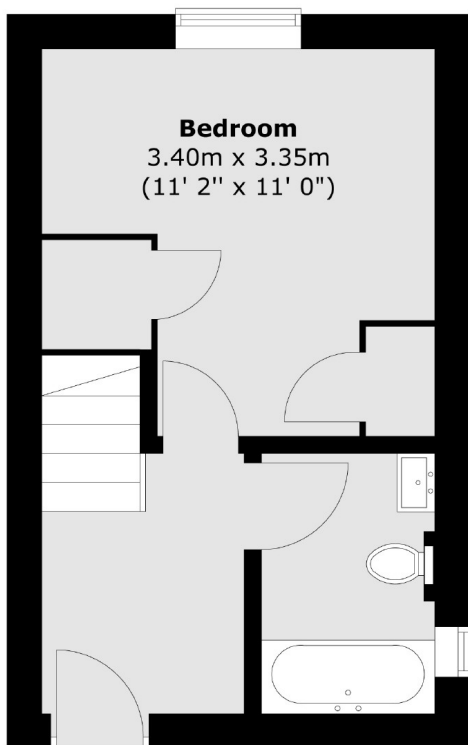
Clapham Common North Side overlooks Clapham Common and has convenient access to the bars and restaurants of both Northcote Road and Clapham Old Town. Clapham Junction railway station & Clapham Common Underground station are a short stroll away.

### Features

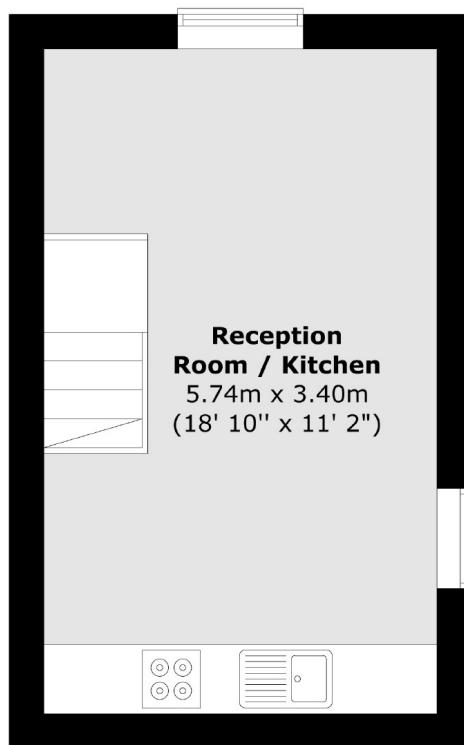
- Victorian Conversion
- Fully Refurbished
- One Double Bedroom
- Open Plan Kitchen/Reception
- Family Bathroom
- Chain Free

# Clapham Common North Side, London, SW4

**First Floor**



**Second Floor**



Total area (approx.) : 39.3 sq. m (423 sq. ft)

## Dexters

Northcote Road  
93 St. John's Road  
London  
SW11 1QY  
Sales  
020 7483 6333

Energy Rating: . We aim to make our particulars both accurate and reliable. However they are not guaranteed; nor do they form part of an offer or contract. If you require clarification on any points then please contact us, especially if you're traveling some distance to view. Please note that appliances and heating systems have not been tested and therefore no warranties can be given as to their good working order.

 **RICS** | Regulated  
Estate Agent  
and Letting Agent

[dexters.co.uk](https://www.dexters.co.uk)