



## Clapham Common North Side, £550,000

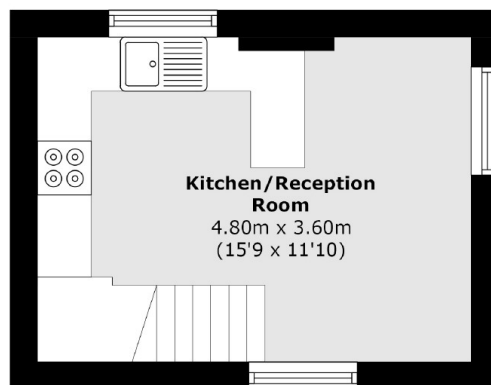
A contemporary, split level Victorian apartment situated on the sought after Clapham Common North Side opposite the Common. Presented in immaculate order throughout, comprising of an open plan reception/kitchen, one double bedroom & family bathroom. The property benefits further from being sold chain free and has a garage available under separate negotiation.

Clapham Common North Side overlooks Clapham Common and has convenient access to the bars and restaurants of both Northcote Road and Clapham Old Town. Clapham Junction railway station & Clapham Common Underground station are a short stroll away.

### Features

- Victorian Conversion
- Fully Refurbished
- One Double Bedroom
- Open Plan Kitchen/Reception
- Family Bathroom
- Chain Free

# Clapham Common North Side, London, SW4



**Second Floor**



**First Floor**

Total area (approx.): 36.9 sq. m (397.1 sq. ft)