



Grayshott Road, SW11

£425,000

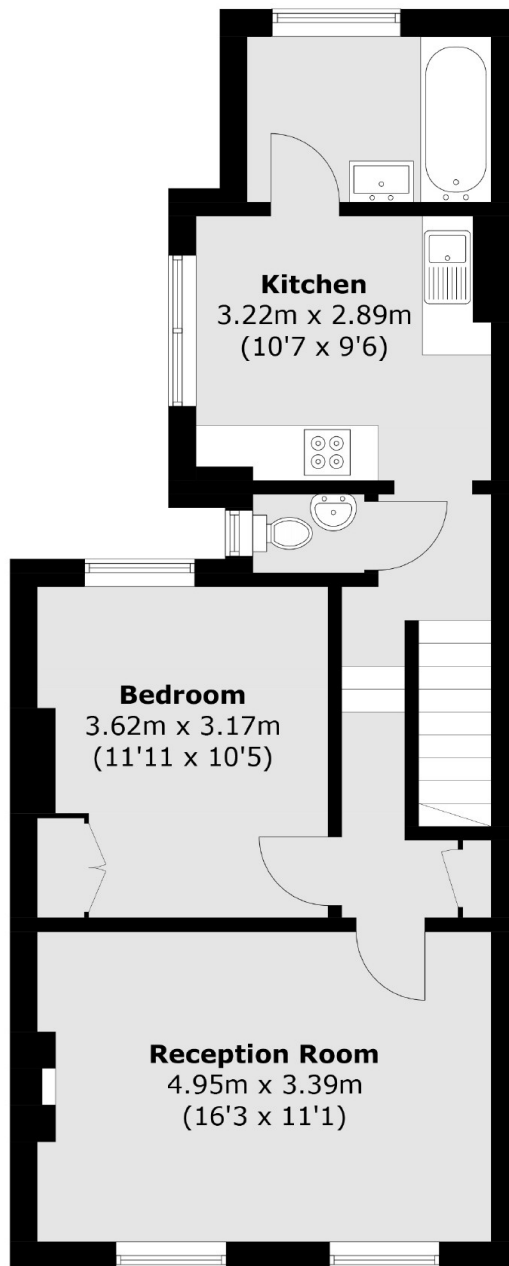
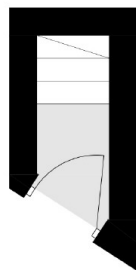
A charming one double bedroom apartment located on the popular Grayshott Road. Accommodation includes a large reception room with high ceilings, separate eat-in kitchen & family bathroom. The property benefits further from extension potential into the loft (STPP) and is being sold chain free.

Grayshott Road is a sought after residential street just off Lavender Hill located near some of the areas best schools. Northcote Road is close by with an array of bars, restaurants and cafés. Transport links can be found at Clapham Common, Clapham Junction & Battersea Park tube station alongside local bus routes with access to the beautiful Battersea Park, Iconic Battersea Power Station, busy Sloane Square & Chelsea.

Features

- Double Bedroom
- Eat-In Kitchen
- Large Reception Room
- Family Bathroom
- Extension Potential (STPP)
- Chain Free

Grayshott Road, London, SW11



Ground Floor

First Floor

Total area (approx.): 54.4 sq. m (585.5 sq. ft)

Dexters

Northcote Road
93 St. John's Road
London
SW11 1QY
Sales
020 7483 6333

Energy Rating: C. We aim to make our particulars both accurate and reliable. However they are not guaranteed; nor do they form part of an offer or contract. If you require clarification on any points then please contact us, especially if you're traveling some distance to view. Please note that appliances and heating systems have not been tested and therefore no warranties can be given as to their good working order.

 **RICS** | Regulated
Estate Agent
and Letting Agent

[dexters.co.uk](https://www.dexters.co.uk)