



Latchmere Road, SW11
£775,000

Dexters



Latchmere Road, SW11

A fully refurbished to the highest of standards three bedroom apartment on the sought after Latchmere Road. The property comprises of a large open plan reception/kitchen/dining room, three double bedrooms, two bathrooms (Inc en-suite) & private garden. The property benefits further from being sold with a share of the freehold, is being sold chain free, comes with warranties on Bi-fold doors/kitchen appliances/furniture/worktops & electrical installation. This property truly is futureproof.

At the front of the property you have an open plan reception/kitchen with integrated premium branded appliances and stunning herringbone flooring throughout. Through the hallway and to the left you have a double bedroom with bespoke built in storage, next door you have a modern family bathroom and just behind this is the Principal bedroom with en-suite. The third double bedroom is located towards the rear of the property and the private garden can be found at the end of the hallway, perfect for entertaining.

Latchmere Road is perfect for commuting from Clapham Junction into Central London and to Gatwick Airport. The green spaces of Clapham Common and Battersea Park are nearby, as are plenty of local pubs, restaurants and shops.

Features

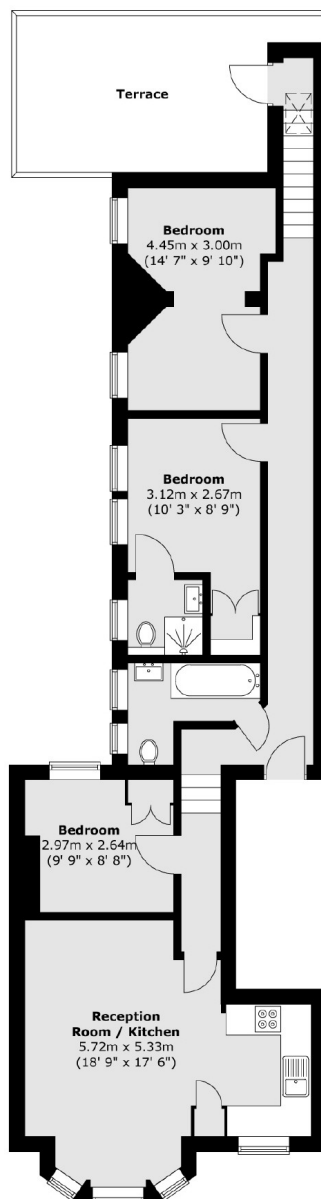
- Three Double Bedrooms
- Private Garden
- Two Bathrooms
- Share Of Freehold
- Numerous Warranties
- Chain Free







Latchmere Road, London, SW11



First Floor

Total area (approx.) : 80.1sq. m (862 sq. ft)
Total terrace area (approx.) : 16.2 sq. m (174 sq. ft)

Dexters

Northcote Road
93 St. John's Road
London
SW11 1QY
Sales
020 7483 6333

Energy Rating: C. We aim to make our particulars both accurate and reliable. However they are not guaranteed; nor do they form part of an offer or contract. If you require clarification on any points then please contact us, especially if you're traveling some distance to view. Please note that appliances and heating systems have not been tested and therefore no warranties can be given as to their good working order.

 **RICS** | Regulated
Estate Agent
and Letting Agent

[dexters.co.uk](https://www.dexters.co.uk)