

## Sangora Road, SW11

£750,000

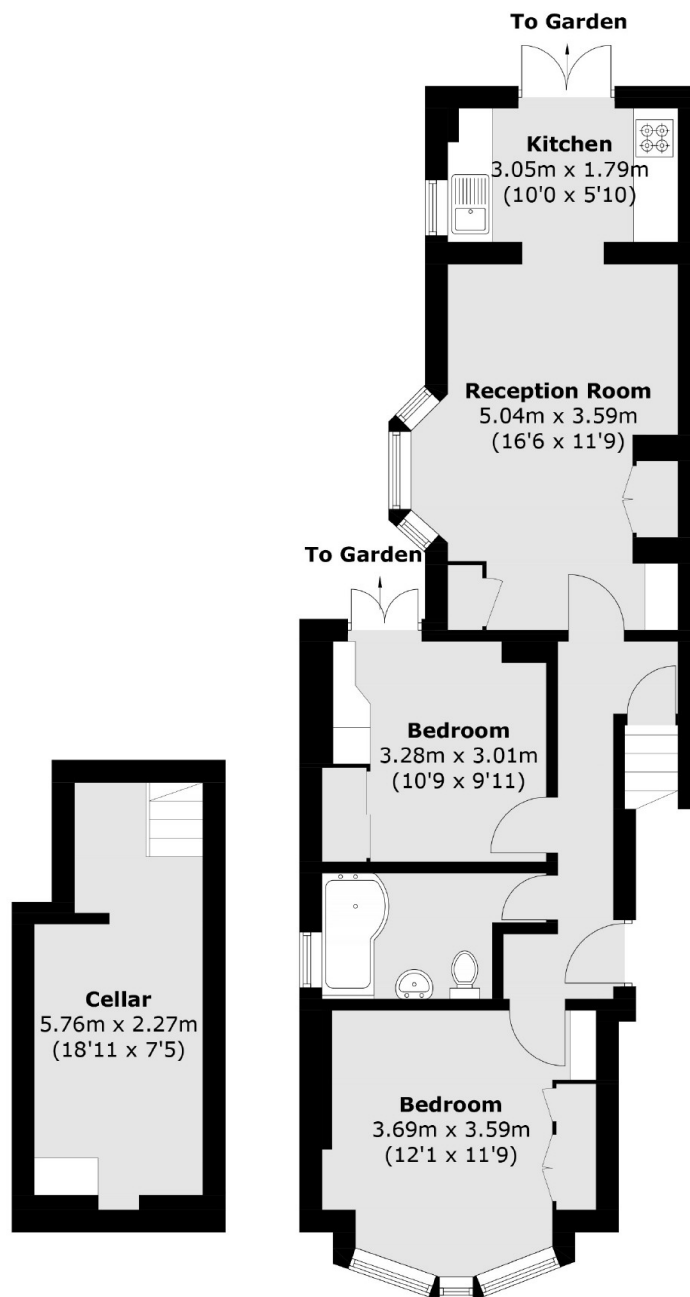
A spacious ground floor garden flat within a beautiful Victorian property. Comprising of a large reception room, modern kitchen leading out to a private garden with rear access, two double bedrooms, family bathroom and a spacious cellar perfect for storage. The property also benefits from a share of the freehold, is being sold chain free and has the opportunity to extend into the side return (STPP).

Sangora Road is a sought after address located moments from the green open spaces of Wandsworth Common and close to the eclectic mix of bars, restaurants and boutiques on St. John's Hill. Clapham Junction Station is just a short stroll away.

### Features

- Large Reception Room
- Modern Kitchen
- Two Double Bedrooms
- Family Bathroom
- Private Garden
- Share Of Freehold

# Sangora Road, London, SW11



## Cellar

5.76m x 2.27m  
(18'11 x 7'5)

## Ground Floor

Total area (approx.): 68.7 sq. m (739.5 sq. ft)  
(Including Cellar)

# Dexters

Northcote Road  
93 St. John's Road  
London  
SW11 1QY

Sales  
020 7483 6333

Energy Rating: - We aim to make our particulars both accurate and reliable. However they are not guaranteed; nor do they form part of an offer or contract. If you require clarification on any points then please contact us, especially if you're traveling some distance to view. Please note that appliances and heating systems have not been tested and therefore no warranties can be given as to their good working order.

 **RICS** | Regulated  
Estate Agent  
and Letting Agent

[dexters.co.uk](http://dexters.co.uk)