



Almeric Road, SW11

£550,000

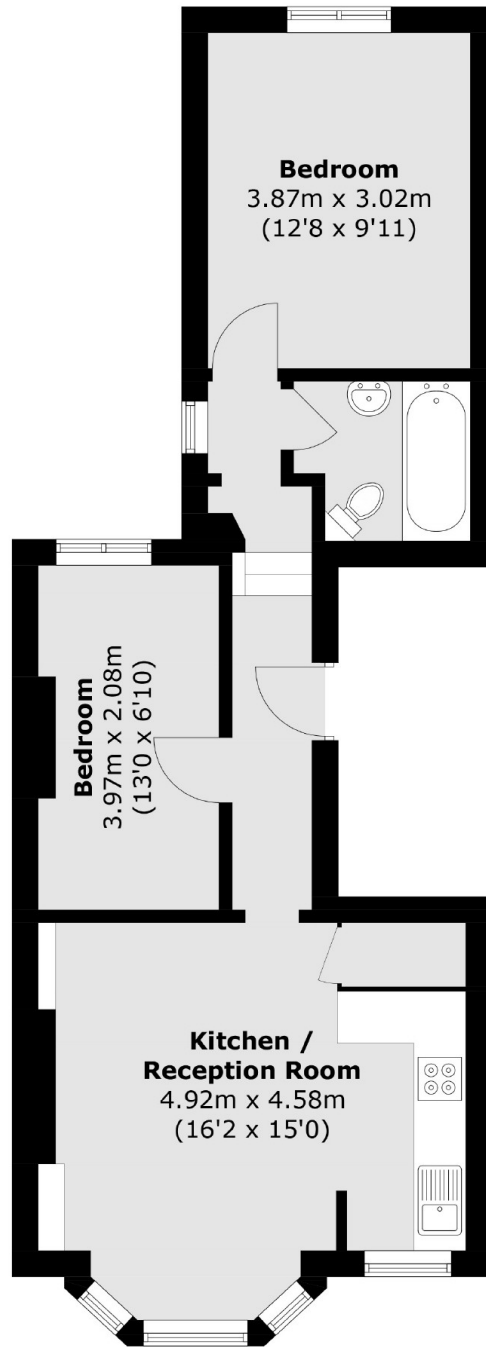
A beautiful period conversion on the sought after Almeric Road located 'Between the Commons'. Arranged to include a spacious open plan reception/kitchen, two double bedrooms and a family bathroom. The property also benefits from owning a share of the freehold and is moments from Clapham Junction station & Northcote Road.

Almeric Road is ideally situated for all the popular amenities located on Northcote Road, Battersea Rise itself and St. John's Road. The green open spaces of both Wandsworth and Clapham Commons are close by. Clapham Junction station is a short stroll away.

Features

- Victorian Conversion
- Two Double Bedrooms
- Spacious Reception Room
- Family Bathroom
- Between The Commons
- Share Of Freehold

Almeric Road, London, SW11



First Floor

Total area (approx.): 51.4 sq. m (553.3 sq. ft)