



Banbury Street, SW11

£450,000

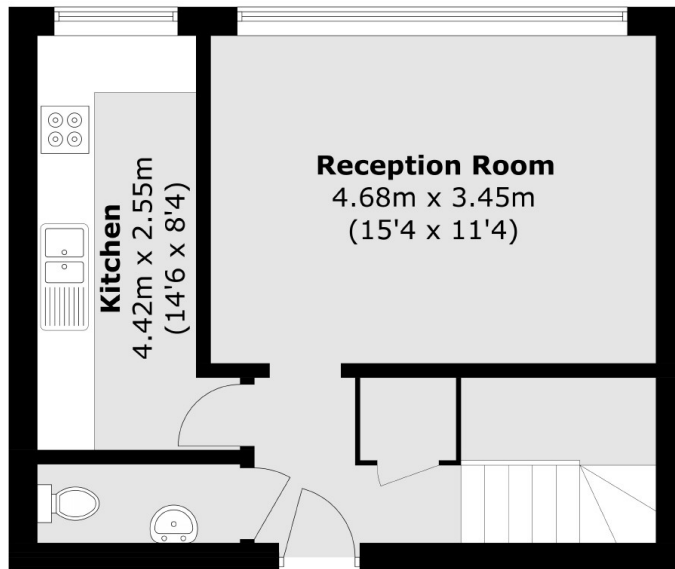
A split level two double bedroom apartment located moments from Battersea Park. Accommodation includes a large reception room & separate kitchen, two double bedrooms and a modern family bathroom. The property further benefits from a communal garden with direct access and has its own private entrance.

Mccarthy Court is a sought after development near the River Thames. Located conveniently for Battersea Park as well as easy access to the Kings Road in Chelsea. Clapham Junction railway station is also a short walk away.

Features

- Two Double Bedrooms
- Large Reception Room
- Communal Garden
- Superb Location
- Modern Bathroom
- Private Entrance

Banbury Street, London, SW11



First Floor



Ground Floor

Total area (approx.): 72.5 sq. m (780.4 sq. ft)

Dexters

Northcote Road
93 St. John's Road
London
SW11 1QY
Sales
020 7483 6333

Energy Rating: . We aim to make our particulars both accurate and reliable. However they are not guaranteed; nor do they form part of an offer or contract. If you require clarification on any points then please contact us, especially if you're traveling some distance to view. Please note that appliances and heating systems have not been tested and therefore no warranties can be given as to their good working order.

 **RICS** | Regulated
Estate Agent
and Letting Agent

[dexters.co.uk](https://www.dexters.co.uk)