



Eversleigh Road, SW11

£1,000,000

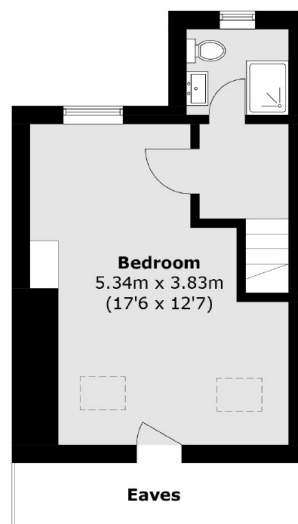
A superb three double bedroom fully extended Shaftesbury cottage. On the ground floor there is a bright and airy reception room and a large open plan kitchen/diner to the rear leading onto a private garden. Upstairs there are three double bedrooms and two bathrooms.

Eversleigh Road is a residential street in the popular Shaftesbury area of Battersea. Clapham Common, Battersea Park and the iconic Battersea Power Station are all nearby, as are the transport links at Clapham Junction mainline train station.

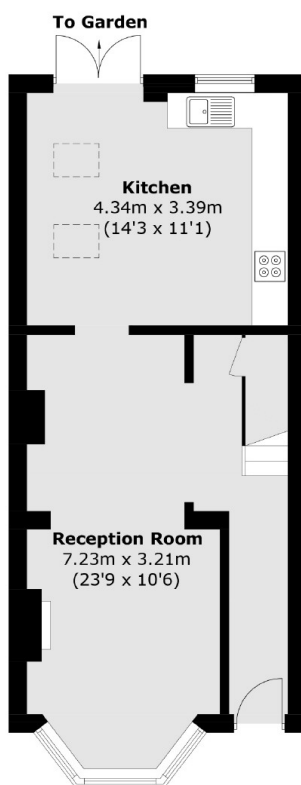
Features

- Freehold House
- Fully Extended
- Three Double Bedrooms
- Two Bathrooms
- Private Garden

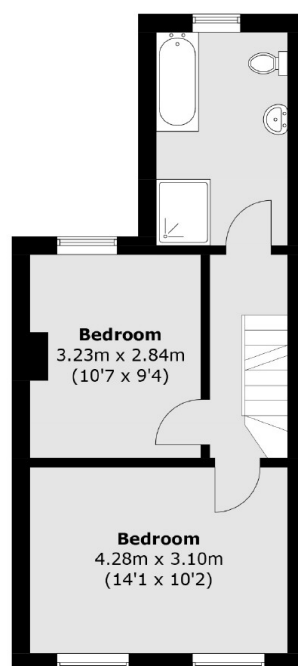
Eversleigh Road, London, SW11



Second Floor



Ground Floor



First Floor

Total area (approx.): 109.1 sq. m (1,174.3 sq. ft)
(Excluding Eaves)