



## Aliwal Road, SW11

### £600,000

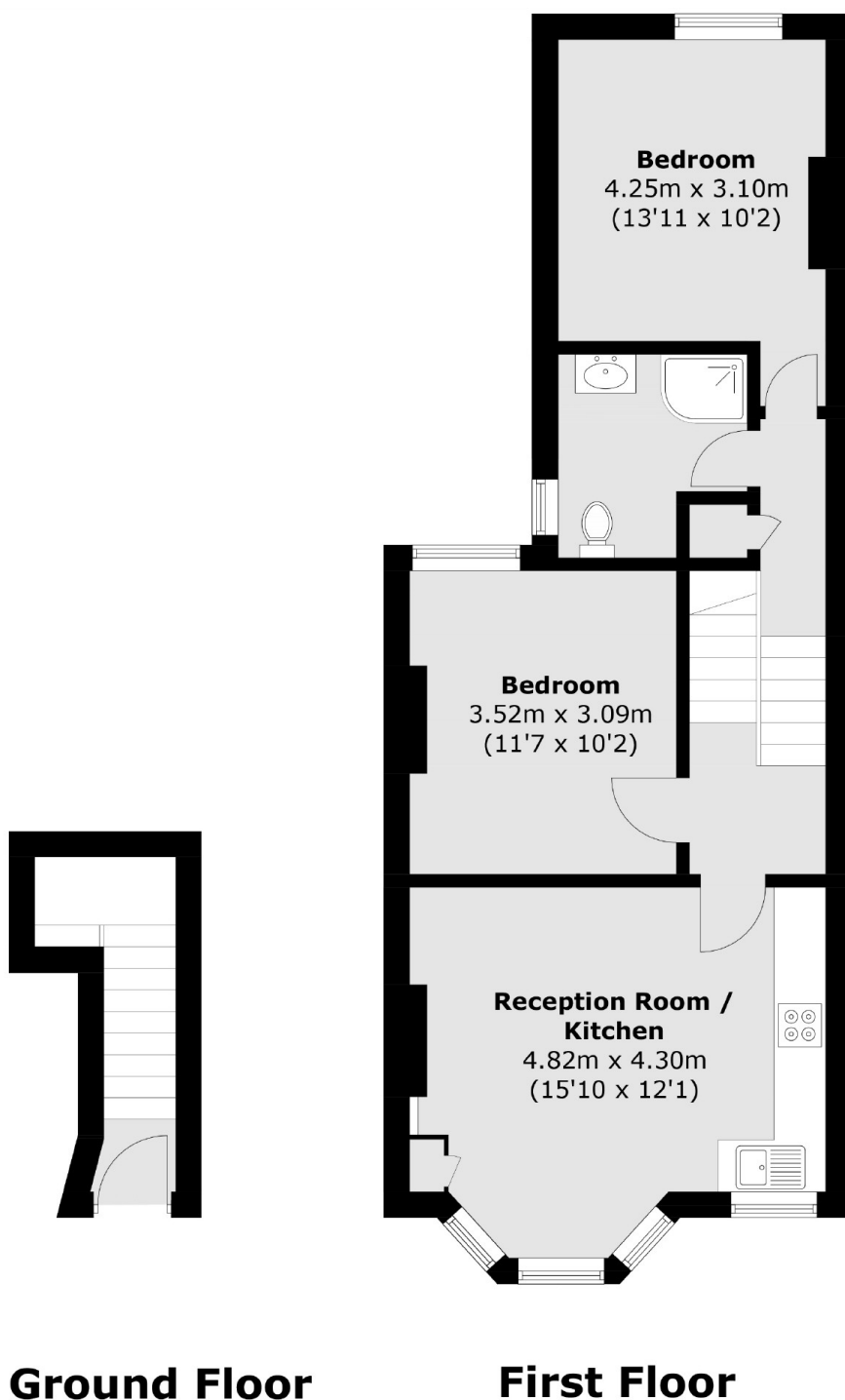
A spacious first floor period conversion measuring over 639 Sq Ft. Arranged to include a large open plan reception/kitchen, two double bedrooms and a family bathroom. The property also benefits from extension potential into the loft (STPP) and is being sold chain free.

Aliwal Road is ideally situated for all the popular amenities located on Northcote Road, Battersea Rise and St. John's Road. Also one of the most sought after roads in Clapham Junction as there is no through traffic. The green open spaces of both Wandsworth and Clapham Commons are close by. Clapham Junction station is a short stroll away.

### Features

- Two Double Bedrooms
- Open Plan Reception/Kitchen
- Family Bathroom
- Extension Potential (STPP)
- Superb Location
- Chain Free

Aliwal Road,  
London, SW11



Total area (approx.): 59.4 sq. m (639.4 sq. ft)

**Dexters**

Northcote Road  
93 St. John's Road  
London  
SW11 1QY  
Sales  
020 7483 6333

Energy Rating: . We aim to make our particulars both accurate and reliable. However they are not guaranteed; nor do they form part of an offer or contract. If you require clarification on any points then please contact us, especially if you're traveling some distance to view. Please note that appliances and heating systems have not been tested and therefore no warranties can be given as to their good working order.

 **RICS** | Regulated  
Estate Agent  
and Letting Agent

dexters.co.uk