



Juniper Drive, SW18

£375,000

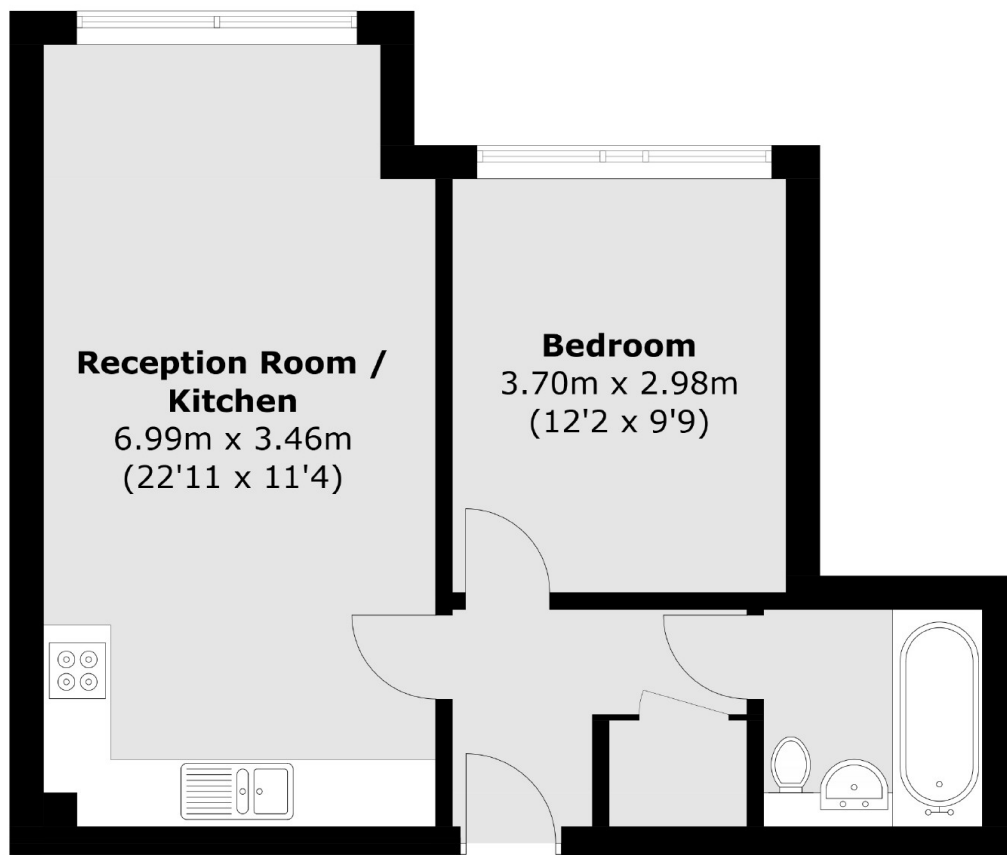
An impressive one double bedroom lateral apartment situated within the sought-after Flotilla House in the Battersea Reach development. Comprising an open plan reception room/kitchen, double bedroom & modern bathroom. The property benefits further from stunning views, has 24 hour concierge, on site gym and underground parking available. The property is being sold chain free.

The Battersea Reach development offers high end riverside accommodation and is conveniently located for access North of the River and into Central London. Wandsworth Town station and Clapham Junction are nearby.

Features

- Open Plan Kitchen/Reception
- Large Double Bedroom
- Family Bathroom
- Stunning Views
- 24 Hr Concierge
- Chain Free

Juniper Drive, London, SW18



Total area (approx.): 45.5 sq. m (489.8 sq. ft)

Dexters

Northcote Road
93 St. John's Road
London
SW11 1QY
Sales
020 7483 6333

Energy Rating: B. We aim to make our particulars both accurate and reliable. However they are not guaranteed; nor do they form part of an offer or contract. If you require clarification on any points then please contact us, especially if you're traveling some distance to view. Please note that appliances and heating systems have not been tested and therefore no warranties can be given as to their good working order.

 **RICS** | Regulated
Estate Agent
and Letting Agent

[dexters.co.uk](https://www.dexters.co.uk)