



## Queenstown Road, SW8

### £625,000

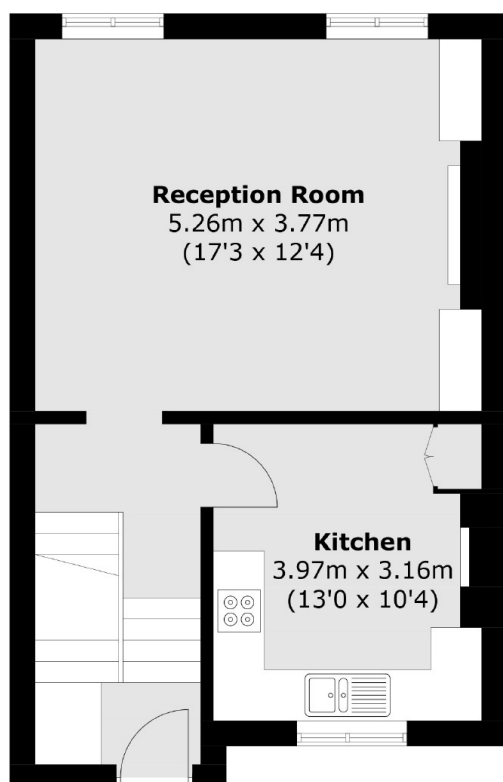
A two double bedroom refurbished split level flat within a beautiful Grade II listed building, measuring over 943 sq ft located on the sought after Queenstown Road. The apartment comprises of a spacious reception, separate modern kitchen with built in appliances, two double bedrooms and family sized bathroom.

Queenstown Road is in the heart of the Diamond Conservation Area, close to the Battersea Power Station, ideally located for Battersea Park, Chelsea and convenient transport links via Battersea Park Road, Queenstown Road, as well as the Northern Line Extension.

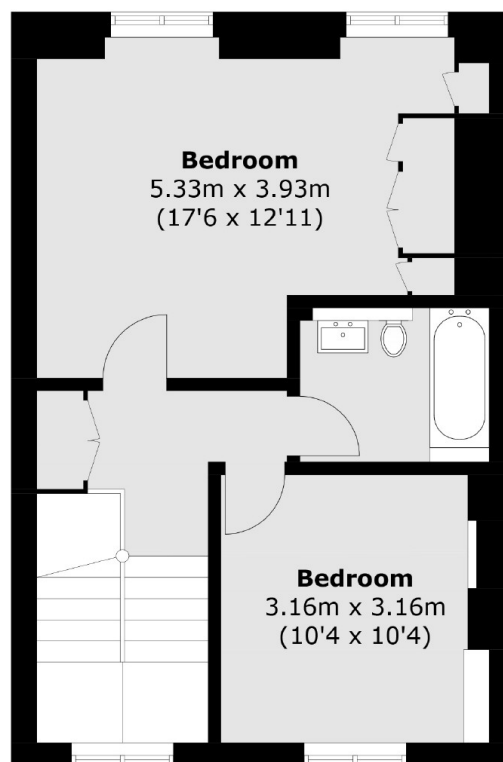
### Features

- Two Double Bedrooms
- Modern Kitchen
- Measuring Over 943 Sq Ft
- Superb Location
- Refurbished
- Grade II Listed Building

# Queenstown Road, London, SW8



**First Floor**



**Second Floor**

Total area (approx.): 87.7 sq. m (943.9 sq. ft)