



Garfield Road, SW11

£759,000

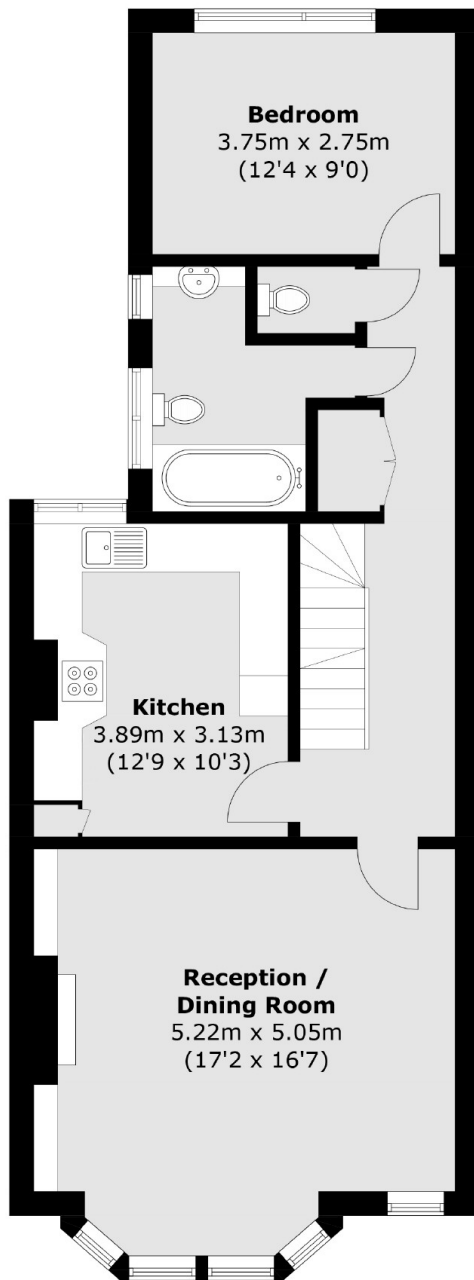
A beautiful top floor Victorian conversion presented in excellent order throughout, measuring over 1,200 Sq Ft. Arranged to include a large reception room, separate eat-in kitchen, three double bedrooms, modern bathroom, extra WC and private garden. The property benefits further from extension potential (STPP), has a share of the freehold & is being sold chain free.

Garfield Road is a sought after residential street just a short walk away from Clapham Common. Close by an array of bars, restaurants and cafés. Transport links can be found at Clapham Common and Clapham Junction alongside local bus routes with access to the beautiful Battersea Park and busy Sloane Square.

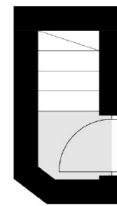
Features

- Three Double Bedrooms
- Private Garden
- Share Of Freehold
- Extension Potential (STPP)
- Measuring Over 1,200 Sq Ft
- Chain Free

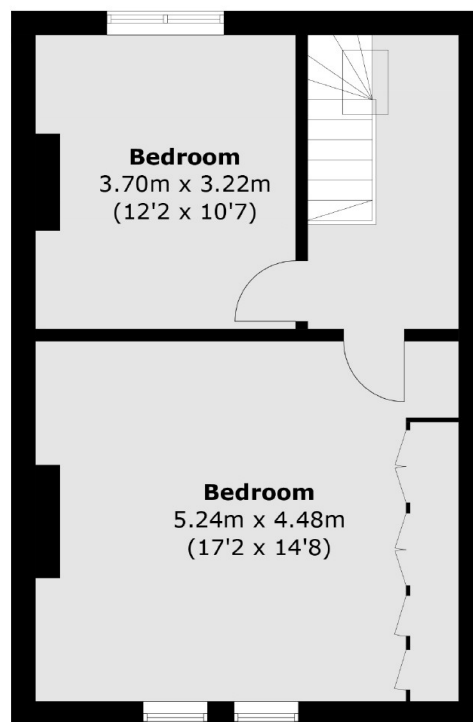
Garfield Road, London, SW11



First Floor



Ground Floor



Second Floor

Total area (approx.): 113 sq. m (1216.3 sq. ft)