



Comyn Road, SW11

£775,000

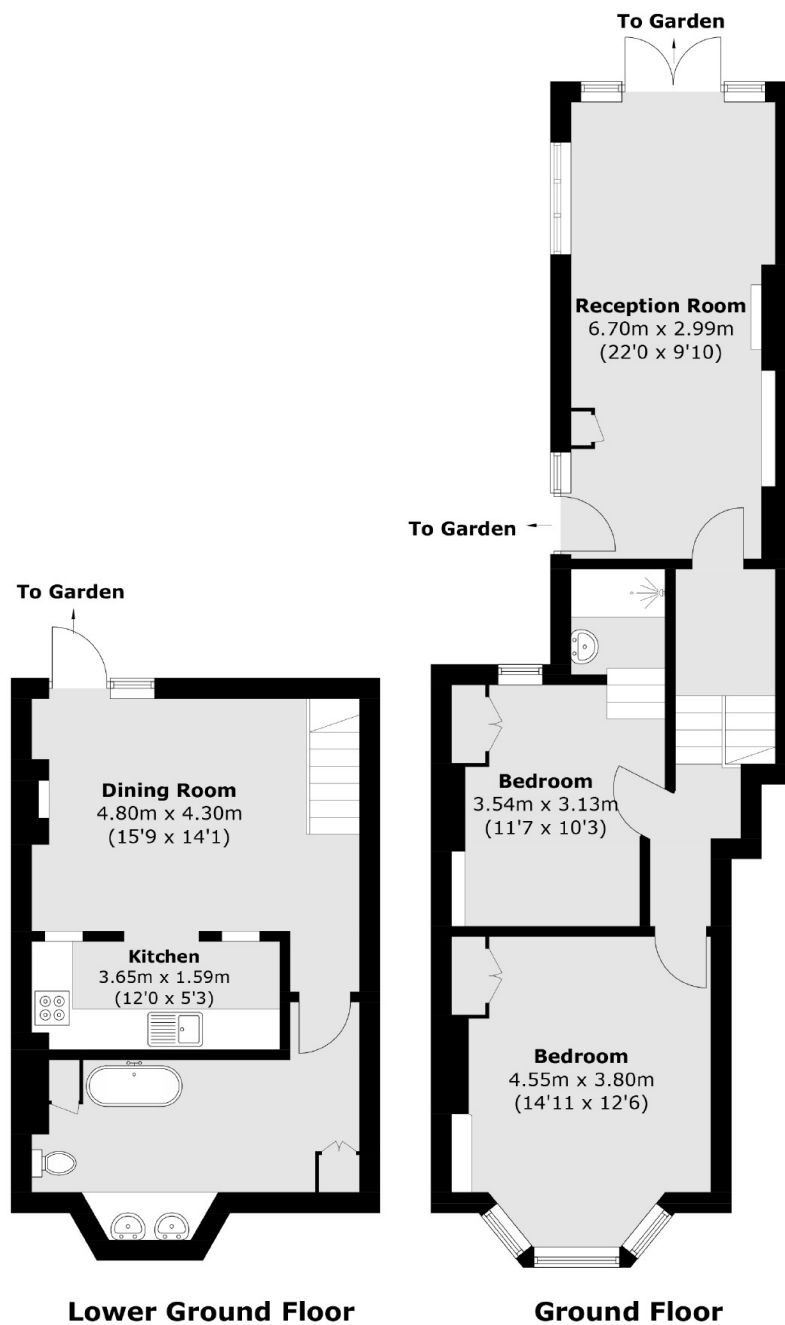
An exceptional Victorian conversion on one of the most sought after roads in Clapham Junction measuring over 1000 Sq. Ft. Comprising a large reception room, separate kitchen/dining room both benefitting from direct access onto the spacious private garden, two double bedrooms & two bathrooms (inc en-suite). The property also benefits from extension opportunity into the side return (STPP), has a share of the freehold and is being sold chain free.

Comyn Road is ideally situated for all the popular amenities located on Northcote Road, Battersea Rise and St. John's Road. The green open spaces of both Wandsworth and Clapham Commons are close by. Clapham Junction station is a short stroll away.

Features

- Two Double Bedrooms
- Measuring Over 1000 Sq. Ft
- Private Garden
- Share Of Freehold
- Extension Opportunity (STPP)
- Chain Free

Comyn Road, London, SW11



Total area (approx.): 93.3 sq. m (1,004.3 sq. ft)