



Thorndean Street, SW18

£600,000

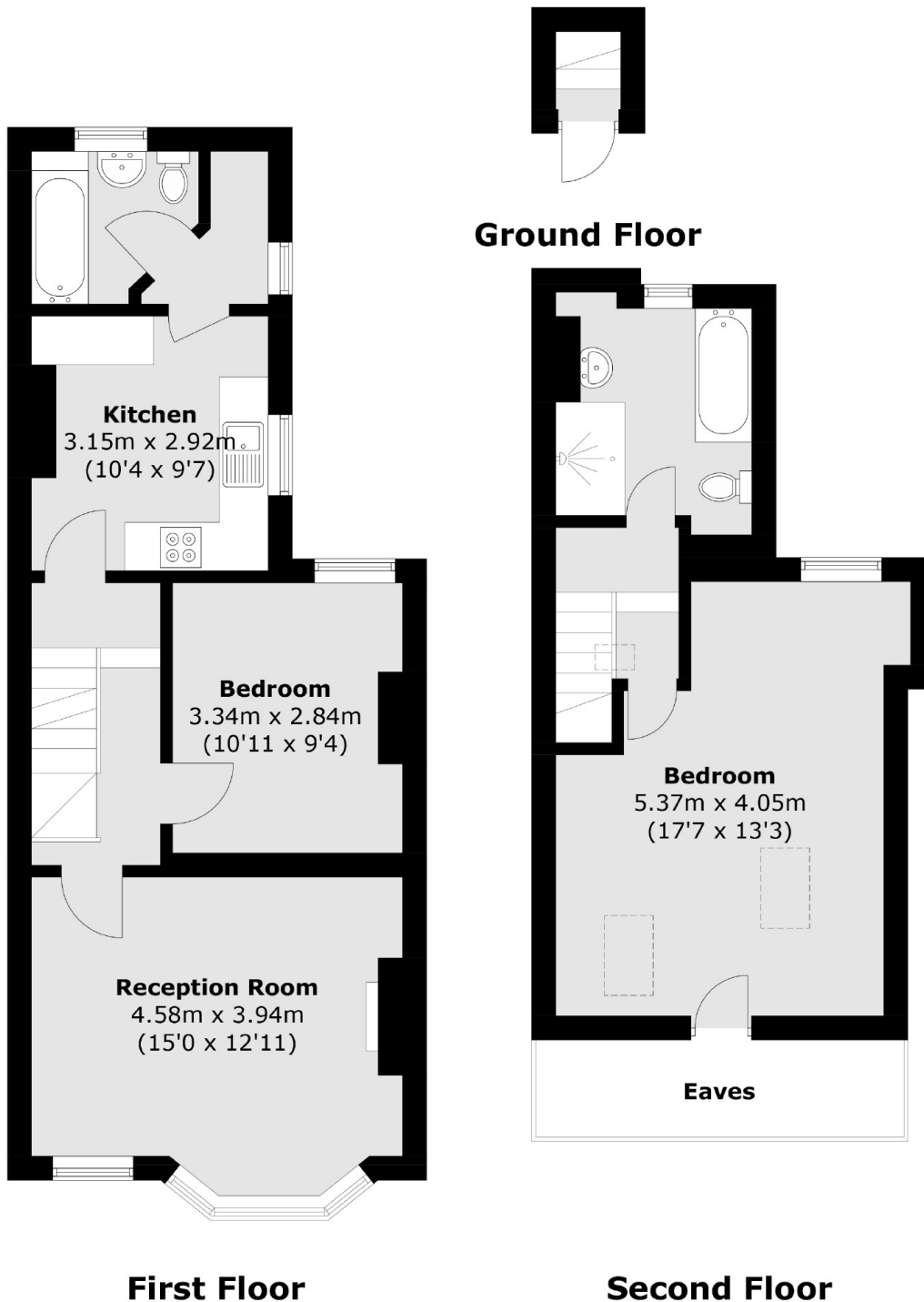
A spacious split level top floor period conversion measuring over 865 Sq Ft. Arranged to include a large reception room, separate kitchen, two double bedrooms & two bathrooms. The property benefits further from a share of the freehold, has a shared garden and is being sold chain free.

Thorndean Street is well placed for accessing a wide range of local amenities in Earlsfield, Wandsworth and Balham with Earlsfield station (National Rail) just a short stroll away.

Features

- Victorian Conversion
- Large Reception Room
- Two Double Bedrooms
- Two Bathrooms
- Shared Garden
- Chain Free

Thorndean Street, London, SW18



Total area (approx.): 80.4 sq. m (865.4 sq. ft)
(Excluding Eaves)