



Edgel Street, SW18

£875,000

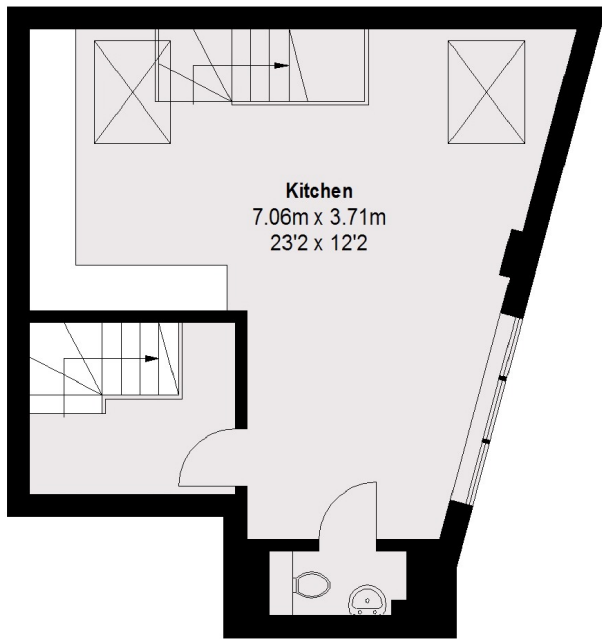
A superb apartment measuring in excess of 1000 sq ft and arranged over three floors. It has a large en-suite double bedroom, additional versatile double room that can be used as a study/media room/guest room, large open plan kitchen/living room and private roof terrace.

Edgel Street is located just off Old York Road with its selection of cafes, restaurants and popular local pubs with excellent shopping at Southside shopping centre and British Rail at Wandsworth Town.

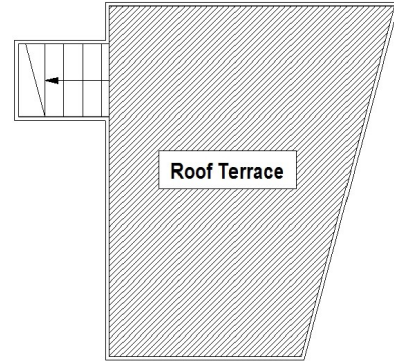
Features

- Exposed Brickwork
- Private Entrance
- Private Large Terrace
- Measuring over 1,000 Sq Ft
- Chain Free
- Close To Amenities

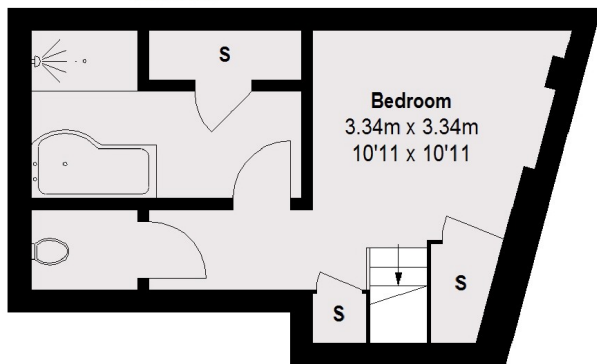
Edgel Street, London, SW18



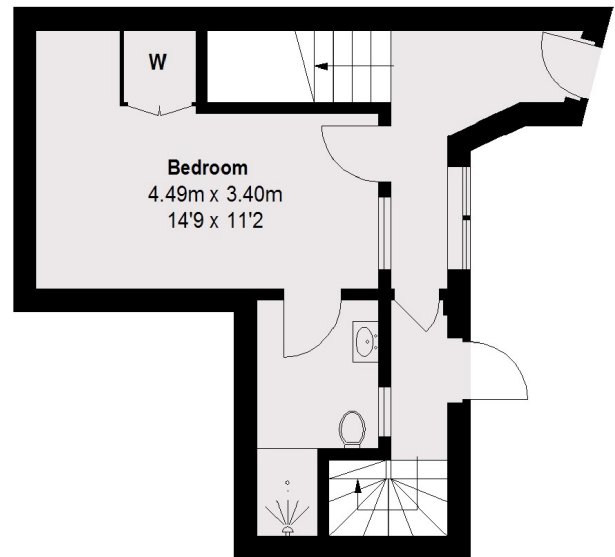
First Floor



Roof Terrace



Basement



Ground Floor

Total area (approx.): 95.42 sq. m (1027 sq. ft)
Roof Terrace: 14.39 sq. m (155 sq. ft)