



Acanthus Road, SW11

£670,000

A substantial freehold home measuring over 1,000sq ft. Comprising a large reception room, three double bedrooms, an eat-in kitchen, two bathrooms with an additional W/C and a private South facing garden. The property also benefits from being a short stroll away from Clapham Junction Station/ Clapham Common and is being sold chain free.

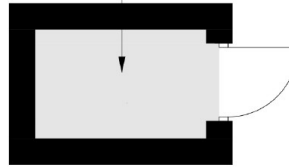
Acanthus Road is a sought after residential street off Lavender Hill & Clapham Common North Side located near some of the areas best schools. Northcote Road is close by with an array of bars, restaurants and cafés. Transport links can be found at Clapham Common and Clapham Junction alongside local bus routes with access to the beautiful Battersea Park and busy Sloane Square.

Features

- Freehold Home
- Three Double Bedrooms
- Measuring over 1,000 Sq Ft
- Private South Facing Garden
- Superb Location
- Chain Free

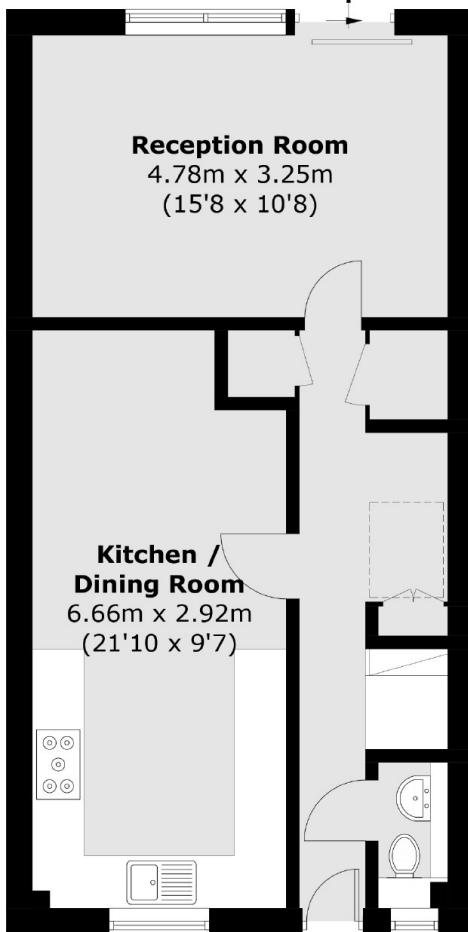
Acanthus Road, London, SW11

Shed
1.97m x 1.26m
(6'6" x 4'2")

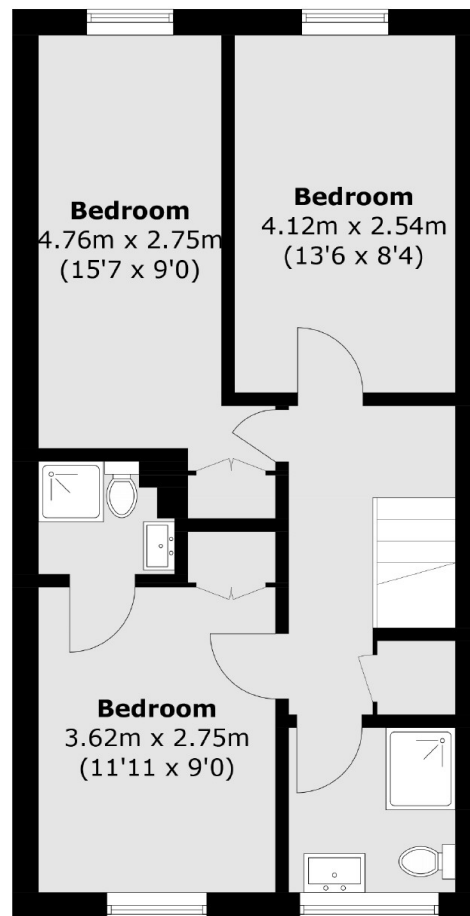


(Not Shown In Actual
Location / Orientation)

To Garden



Ground Floor



First Floor

Total area (approx.): 95.8 sq. m (1,031.2 sq. ft)
Shed : 2.6 sq. m (28.0 sq. ft)