



**St. John's Hill, SW11**

**£1,150,000**

**Dexters**



## St. John's Hill, SW11

A stunning penthouse within the popular Lumiere Apartment development with breathtaking views of London. The property comprises a large open plan reception/kitchen, two double bedrooms, two bathrooms (inc en-suite) & oversized wrap around private roof terrace. The property further benefits from concierge, communal roof terrace, communal cinema, has a share of the freehold & is moments from Clapham Junction station.

There are two large double bedrooms, the Principle bedroom has an en-suite and both rooms have direct access to the private terrace. There is a spacious open plan living area great for entertaining. The modern kitchen/dining area has plenty of worktop space and storage and includes a range of integrated appliances. There is a large wrap around private terrace with stunning views of London and most of the apartment has floor to ceiling windows filling it with vast amounts of natural light.

Lumiere Apartments is perfectly located for the green open spaces of Wandsworth Common and close to the eclectic mix of bars, restaurants and boutiques on St. John's Hill/Road & Northcote Road. Clapham Junction Station is literally moments away and couldn't be easier for commuters.

### Features

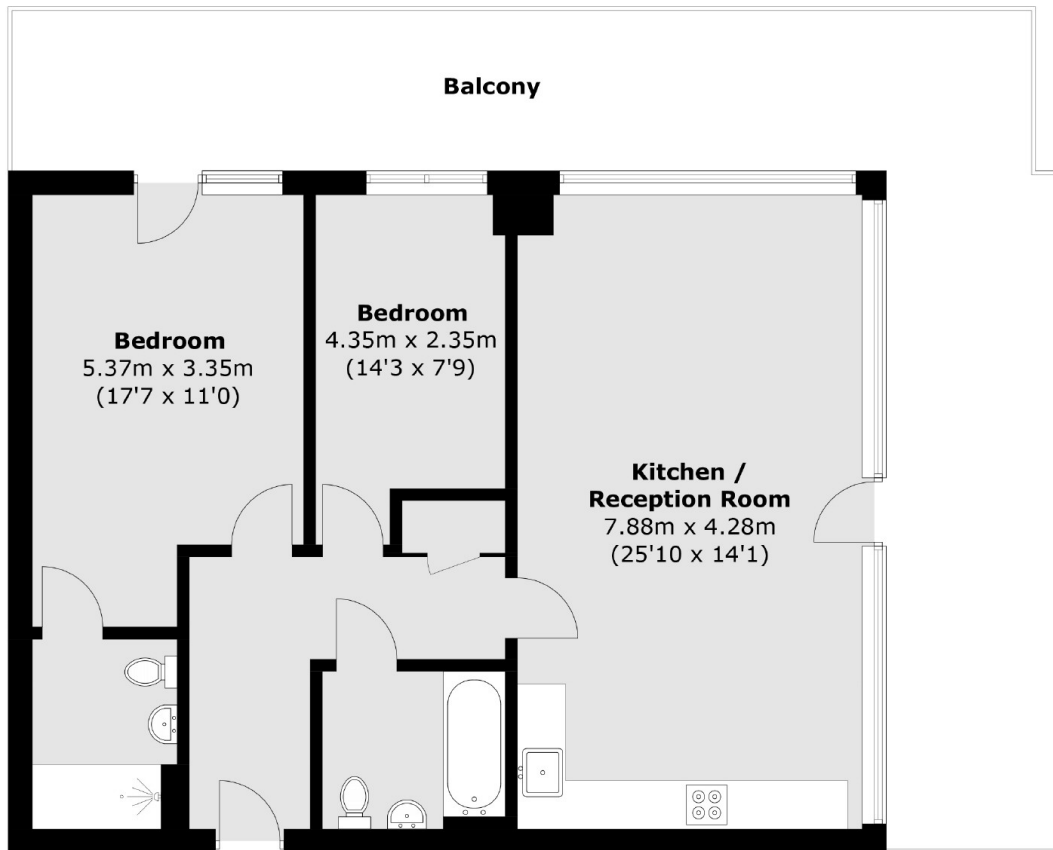
- Penthouse Apartment
- Two Double Bedrooms
- Two Bathrooms
- Large Private Roof Terrace
- Communal Cinema
- Breathtaking Views Of London







# St. John's Hill, London, SW11



## Sixth Floor

Total area (approx.): 81.5 sq. m (877.3 sq. ft)  
Balcony: 43.0 sq. m (462.8 sq. ft)

**Dexters**

Northcote Road  
93 St. John's Road  
London  
SW11 1QY  
Sales  
020 7483 6333

Energy Rating: - We aim to make our particulars both accurate and reliable. However they are not guaranteed; nor do they form part of an offer or contract. If you require clarification on any points then please contact us, especially if you're traveling some distance to view. Please note that appliances and heating systems have not been tested and therefore no warranties can be given as to their good working order.

 **RICS** | Regulated  
Estate Agent  
and Letting Agent

dexters.co.uk