



Cedars Road, SW4

£512,500

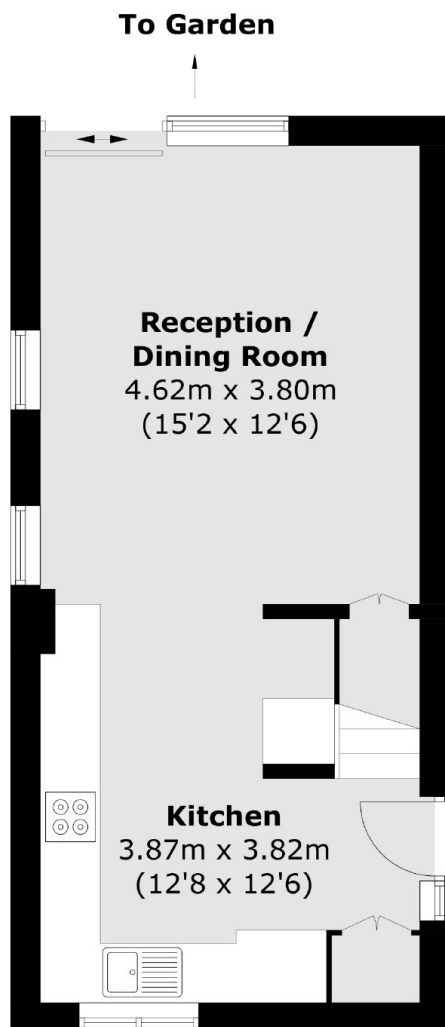
A spacious split level maisonette measuring over 710 sq ft with large private garden located moments from the green open spaces of Clapham Common. Comprising an open plan reception/ kitchen/dining room leading out to a private garden, two double bedrooms and a family bathroom. The property further benefits from off street parking with a permit, has access to separate storage units/garage via separate negotiation and has rear access through the garden.

Cedars Road runs between Clapham Common Northside & Wandsworth Road so ideal for access into both Clapham High Street & Clapham Junction with great transport links at Clapham Common (Northern Line).

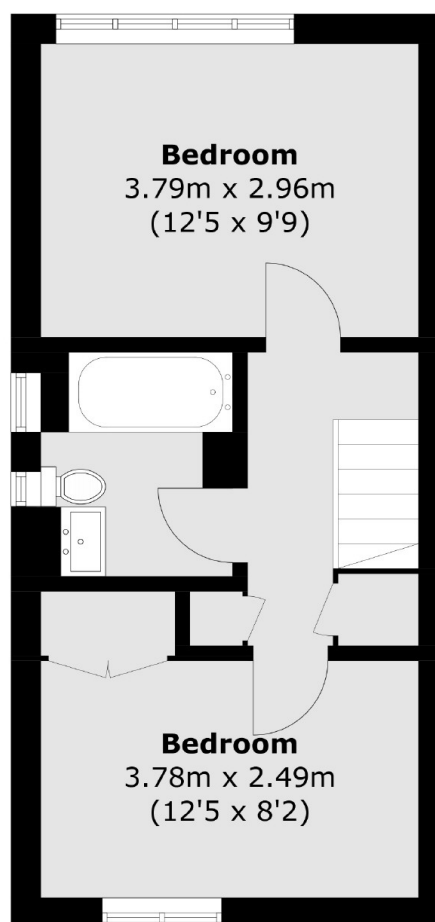
Features

- Split Level Maisonette
- Two Double Bedrooms
- Private Garden & Rear Access
- Superb Location
- Measuring Over 710 Sq Ft
- Off Street Parking With Permit

Cedars Road, London, SW4



Ground Floor



First Floor

Total area (approx.): 66.0 sq. m (710.3 sq. ft)